



1 NO
POVERTY



Message From the Rector

In an era when the world faces mounting environmental, social, and economic challenges, the role of universities has become more vital than ever. Institutions of higher education are not only centers of learning but also agents of transformation — shaping knowledge, values, and actions that define the future of our planet and humanity.

At Biruni University, we embrace this global responsibility with determination and vision. Guided by the United Nations Sustainable Development Goals (SDGs), we are committed to advancing sustainability through excellence in education, innovative research, and community-centered impact.

Our mission extends beyond academic achievement; it is about producing knowledge that heals, transforms, and sustains life in all its forms.

As a pioneering health sciences university, we channel our scientific expertise toward creating solutions that enhance well-being and social equity. Our multidisciplinary approach allows us to integrate health, innovation, and sustainability — transforming research into real-world benefits for people and communities. The projects and studies we carry out, particularly in the fields of medicine, health, and technology, stand as concrete reflections of this commitment.

Our understanding of sustainability transcends academic boundaries. It is woven into the fabric of our campuses, hospitals, and community initiatives — from energy efficiency and environmentally friendly infrastructure to nurturing students with the awareness and capacity to become responsible global citizens.

Through the dedication of our academic and administrative teams, and the unwavering support of our partners, Biruni University continues to build a resilient, inclusive, and sustainable future. Together, we reaffirm our pledge to serve humanity through science and compassion — today and for generations to come.



Prof. Dr. Adnan Yüksel
Rector, Biruni University

Message From the Editor

The world is entering an age of profound transformation — one that demands wisdom as much as it demands action. Climate disruption, social fragmentation, and economic imbalance have made it clear that the systems which once defined progress can no longer sustain it. Humanity needs a new compass — one that points toward balance, compassion, and collective renewal.

Universities stand at the very heart of this change. They are not merely institutions of teaching and research; they are the laboratories of humanity's future — places where science, conscience, and purpose must meet.

At Biruni University, we see sustainability not as a goal to be reached, but as a way of being. It is the thread that weaves through our research, our classrooms, our hospitals, and our partnerships. It is how we measure success —

by the difference we make in people's lives and the legacy we leave for the generations to come.

Guided by the **United Nations Sustainable Development Goals**, we are reimagining higher education as a force for healing — for reconnecting human progress with planetary well-being, for bridging innovation with empathy, and for transforming knowledge into impact.

Our mission is both scientific and moral: to cultivate minds that create, question, and care; to generate ideas that build a more equitable, peaceful, and sustainable world. Every discovery, every collaboration, every act of learning becomes part of a larger story — the story of humanity's renewal through knowledge.

This report is more than an evaluation of where we stand; it is a reflection of who we choose to be. Biruni University stands as a living commitment

to the idea that education can heal, science can serve, and together we can build a future worthy of hope.



Aslıhan Güzin ALSAN, P.h.D. FHEA
Director of Institutional Impact,
Visibility and Corporate Reputation



BIRUNI UNIVERSITY COMMITMENT TO ENDING POVERTY

Poverty is not merely a lack of income — it is the absence of opportunity, dignity, and choice. It is the silent weight that limits human potential and weakens the collective vitality of societies. To end poverty is therefore not only a social or economic goal; it is an act of restoring balance to the human story.

At Biruni University, we approach the challenge of poverty through a holistic lens that unites science, compassion, and systems thinking. We believe that sustainable solutions emerge when education, innovation, and empathy intersect. In this sense, our work under **Sustainable Development Goal 1: No Poverty** is not confined to financial assistance or temporary relief — it is about empowering individuals and communities to transform their own realities.

Our vision begins with **education as liberation**. We see universities as the great equalizers of society — places where barriers can be broken and potential awakened. Through inclusive admission policies, scholarships for disadvantaged students, and mentorship programs designed to nurture resilience, we seek to ensure that no one's dreams are limited by circumstance.

But our commitment extends beyond the campus gates. As a university rooted in the health sciences, we understand that poverty is multidimensional — it touches health, housing, nutrition, and emotional well-being. Through our hospitals, community clinics, and outreach



initiatives, we serve vulnerable populations not only with care but with knowledge, helping them build sustainable pathways toward self-sufficiency and dignity.

We also recognize that systemic change requires collaboration. Biruni University engages with local governments, NGOs, and international partners to generate data, shape public policy, and scale innovative models that address the structural roots of poverty. Our **Biruni Community Prosperity System (BCPS)** — an institutional platform designed to connect research with social impact — stands as a testament to this vision. By transforming academic expertise into community empowerment, BCPS embodies our belief that universities must not only study the world but also help heal it.

This report reflects our ongoing journey to measure and expand our impact — to turn compassion into strategy, and strategy into measurable transformation. Every initiative, from inclusive education to community-based innovation, carries a single intention: to ensure that every human being has the tools, the confidence, and the support to thrive.

At Biruni University, we believe that ending poverty begins with reimagining what it means to belong — to live in a world where knowledge serves humanity, and where no one is left behind.

Our Approach: Redefining Poverty Through Human Potential

At Biruni University, we reject the narrow definition of poverty as mere material deprivation. Poverty is a disruption in the human ecosystem — a fragmentation of access, awareness, and agency. To truly eradicate it, we must restore the sense of possibility that lives within every individual.

Our approach is anchored in education as the foundation of equality. We see learning not only as a path to employment but as a lifelong instrument of empowerment. Through this lens, every lecture, every mentorship program, and every social initiative becomes a bridge — connecting individuals from disadvantage to self-determination.

We operate with the conviction that knowledge must serve humanity. Therefore, our academic research, clinical practices, and social innovation projects are designed not for prestige, but for purpose. The question that guides us is simple yet profound: How can science and compassion meet to dissolve the roots of poverty, not just its symptoms?



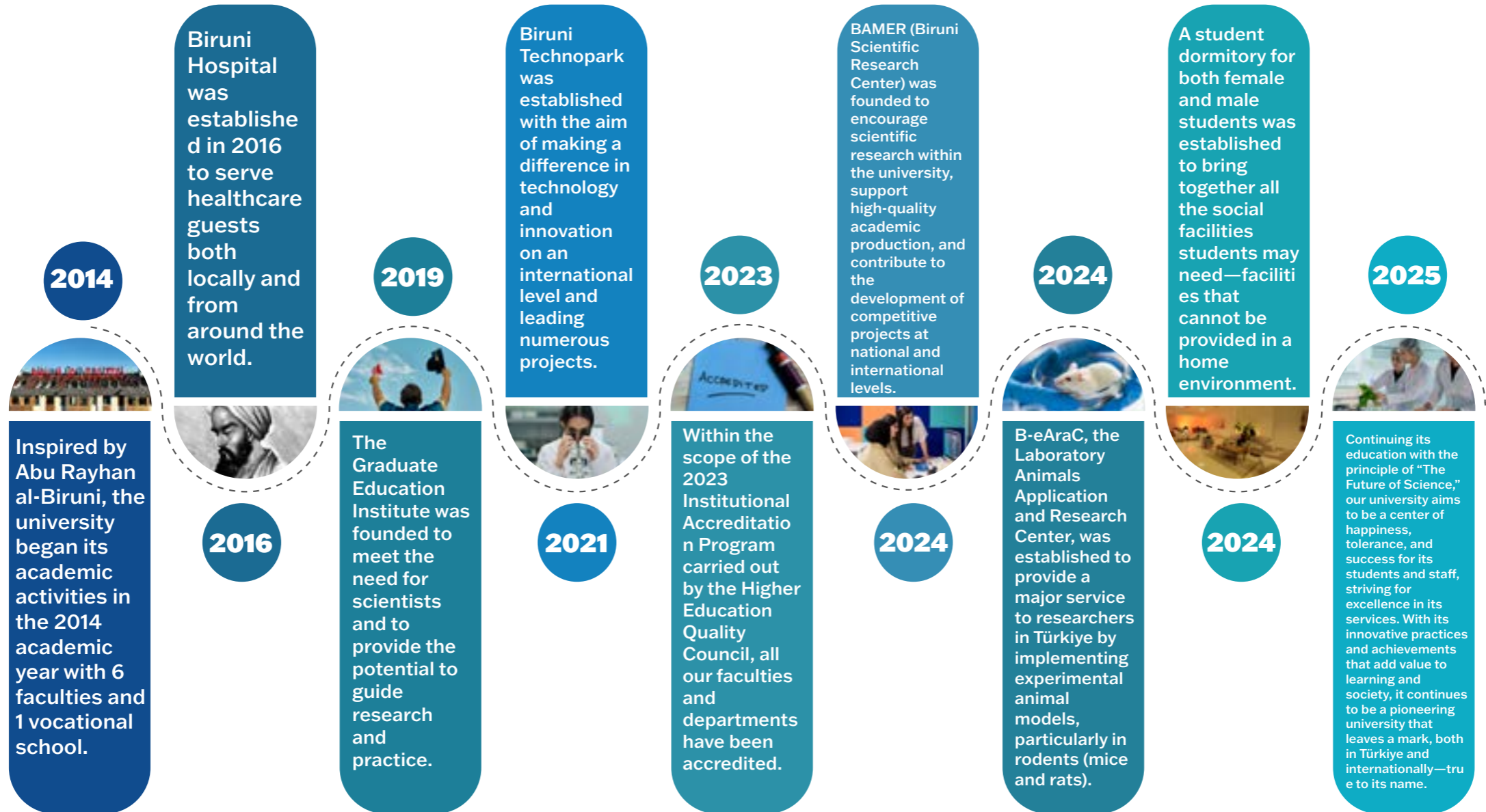
Institutional Framework: Integrating Sustainability Into the Core of Our Mission

Biruni University's sustainability framework is deeply aligned with the United Nations Sustainable Development Goals, particularly SDG 1. Our strategy rests on three pillars: Inclusion, Empowerment, and Transformation.

- **Inclusion** ensures that access to quality education and healthcare is not a privilege but a right.
- **Empowerment** equips individuals with knowledge, skills, and confidence to rise beyond dependency.
- **Transformation** links research with real-world application, ensuring that our outputs translate into measurable social impact.

This philosophy is operationalized through dedicated university offices, interdisciplinary research centers, and community partnerships that track, evaluate, and amplify impact. Each faculty, program, and project carries the imprint of this framework — ensuring that sustainability is not an agenda, but an identity.

O U R S T O R Y



O u r V i s i o n

To be a pioneering university that, true to its name, leaves a lasting mark — leading change through knowledge, innovation, and impact.

O u r M i s s i o n

To be an innovative and leading university that cultivates qualified individuals through transformative education, produces original knowledge at both national and international levels, and contributes to solving societal challenges with scientific and ethical responsibility.

C O R E V A L U E S



K n o w l e d g e

Commitment to learning, discovery, and the pursuit of truth as the foundation of progress.



W i s d o m

Using knowledge with depth, reflection, and ethical judgment to serve humanity.



H u m a n i t y

Placing human dignity, empathy, and compassion at the heart of education, research, and service.



A c a d e m i c F r e e d o m

Protecting the right to think, question, and create freely within an environment of respect and integrity.



P i o n e e r i n g S p i r i t

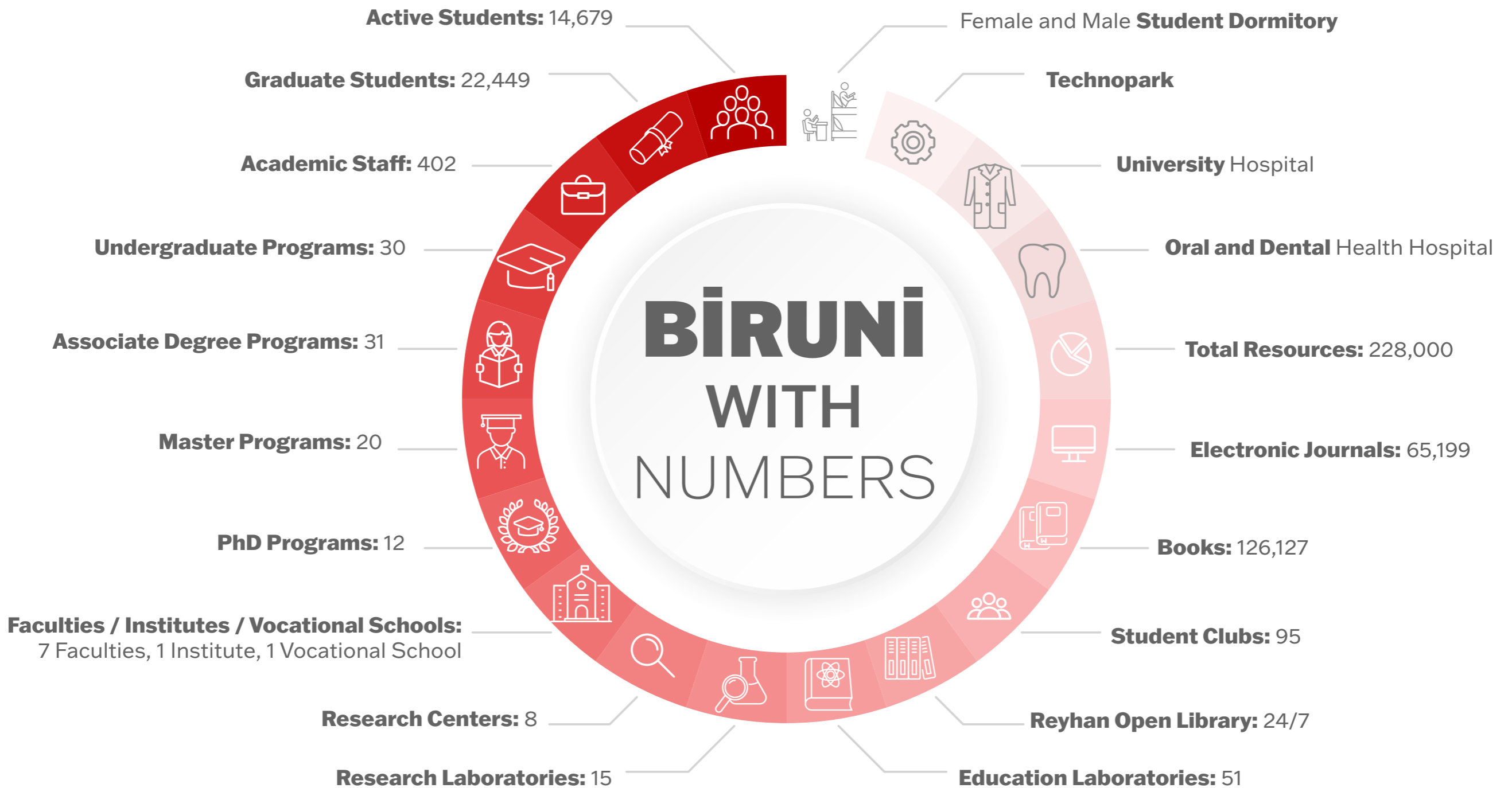
Challenging conventions with creativity and vision; leading transformative change in education and science.



C o u r a g e

Acting with integrity and resilience in the face of uncertainty — daring to stand for what is right and meaningful.

BİRÜNİ WITH NUMBERS



Key Indicators

Biruni University embraces the United Nations Sustainable Development Goal (SDG) 1: No Poverty, and continues to implement practices that promote equal opportunities in education with strong commitment.

With a community of over 9,000 students, the university aims to increase access to higher education for socioeconomically disadvantaged individuals.

In this context, 1,451 students, representing 15% of those from low-income backgrounds, benefit from various scholarship and financial aid programs.

This approach not only provides economic support, but also reflects an inclusive educational philosophy that enables every student to realize their full potential under equal conditions.

9.562

Total Number of Students

1.451

Number of Students Receiving Financial Aid

Operational Digital Skills Training for Digital Inclusion and Employability

Implemented as an operational program by Biruni University, the **Digital Skills Training** initiative aimed to equip participants with fundamental computer and digital technology competencies, focusing on enhancing digital literacy, employability, and community resilience. The training program included practical modules on computer operating systems, office software, internet and email use, data security, and effective work with digital tools, reinforced through workshops and case-based learning to ensure practical skill development.

Designed within the framework of **SDG 1 – No Poverty**, this operational initiative sought to bridge the digital divide, facilitate access to the labor market, and promote economic opportunity and equality. It provided accessible learning materials and support mechanisms to encourage participation from diverse social groups, including individuals with special needs.

Reflecting Biruni University's commitment to sustainability and social impact, the program served as a concrete operational model supporting economic empowerment within local communities, aiming to contribute to long-term poverty reduction through inclusive and skill-based digital transformation.



Biruni University recognizes that long-term poverty reduction cannot rely solely on direct aid or scholarships but must be supported by systemic, evidence-based policy transformation. In this context, the University established the Policy Studio within the Biruni Community Prosperity System (BCPS) as an institutional platform that connects research, education, and civic engagement to policy design and implementation. The Policy Studio functions as a living laboratory where data from Biruni's access and equity programmes—B-ACCESS for domestic learners and B-GASS for international students—are analysed, interpreted, and converted into actionable policy recommendations addressing multidimensional poverty.



POLICY

Institutional Mechanisms



The Policy Studio operates under the governance of the Equality & Inclusion Committee and the Institutional Impact Office, ensuring that all proposals are data-driven, ethically reviewed, and aligned with the United Nations Sustainable Development Goals. It draws on insights from BCPS's three structural tracks:

- the Start & Sustain Track, which generates models for inclusive entrepreneurship;
- the Seed & Scale Track, which provides micro-finance and community venture data; and
- the Access Essentials Track, which monitors the effectiveness of outreach on basic services such as health, education, and digital inclusion.

Findings from these tracks are systematically transformed into policy briefs, implementation guidelines, and impact scorecards that can inform public institutions at local and national levels. The Policy Studio thereby acts as an intermediary body between the university's research ecosystem and governmental decision-makers.

Local and Regional Policy Participation

At the local level, Biruni University collaborates with district municipalities and social development directorates to co-design community development frameworks rooted in BCPS data. These partnerships have focused on issues such as urban poverty mapping, women's labour participation, youth entrepreneurship, and access to affordable housing and education. Faculty members from the Faculties of Health Sciences, Economics, and Education serve as policy fellows who contribute research



findings, while BCPS's "Rapid Policy Labs" host participatory workshops with residents, NGOs, and municipal units to refine proposals before submission. Each pilot is tested within real community contexts and evaluated for scalability and inclusion.

National Policy Contribution



At the national level, Biruni University contributes to the formulation of inclusive-growth and social-enterprise strategies through expert consultations and thematic position papers shared with government ministries and development agencies. The University's data on household income, educational retention, and local business incubation feed directly into Türkiye's higher-education equity and regional-development agendas. B-ACCESS has influenced student-support criteria in several inter-university collaborations, demonstrating how higher-education institutions can operationalize social-mobility pathways for low-income groups. Moreover, BCPS policy briefs—particularly on social impact finance, digital access equity, and inclusive entrepreneurship—are distributed through national conferences and open-access repositories to encourage replication across institutions.

Global Knowledge Exchange and Advocacy

Biruni University extends its policy engagement to the international level through participation in networks focused on social innovation, education equity, and sustainable entrepreneurship. Within the B-GASS (Biruni Global Access & Solidarity Scholarship) framework, the University collects comparative data on student vulnerability, migration, and resilience, contributing to global dialogues on access to education and humanitarian higher-education policy. Faculty experts publish analyses in open journals and collaborate with global partners to design context-sensitive models for refugee education and post-disaster recovery. Through this continuous exchange, Biruni acts as a regional knowledge hub that links national priorities with global good practices.



Community Consultation and Policy Validation



A distinctive feature of Biruni's policy-making process is its community validation mechanism. Before any proposal is finalised, the Policy Studio organizes Public Consultation Forums on campus, inviting representatives of local NGOs, students, and community beneficiaries to provide feedback.

The process ensures that those affected by poverty are not only research subjects but co-creators of the solutions being recommended. The Equality & Inclusion Committee audits each proposal for intersectionality, accessibility, and gender sensitivity, guaranteeing that every policy brief embodies the principles of participation and justice.

Outputs and Influence

The outcomes of these activities are consolidated in the annual BCPS Policy Compendium, which documents all policy briefs, evidence summaries, and partnership agreements produced through the Studio. Among the highlighted outcomes are:

- proposals on micro-grant schemes for women entrepreneurs, later adopted by local authorities;
- frameworks for community-based digital literacy centres integrated into adult-education programs; and



- pilot models for sustainable health outreach that reduce inequality in preventive care access.

The Compendium and accompanying data dashboards are publicly accessible through Biruni University's Sustainability Portal, allowing external verification of the University's policy contributions and their measurable social impact.

Strategic Alignment

Through the Policy Studio and BCPS architecture, Biruni University systematically aligns its academic expertise with public-policy implementation. This integrated ecosystem reflects the University's belief that ending poverty requires coordinated innovation across education, governance, and community practice. All efforts are guided by the principles of transparency, evidence, and inclusivity—ensuring that policy participation is not symbolic but transformative.

By embedding policy engagement into the core of its institutional strategy, Biruni University demonstrates that higher education can function as both a generator and an enabler of social policy. Through BCPS, B-ACCESS, and B-GASS, the University transforms local knowledge into national and global frameworks capable of advancing SDG 1's mission to end poverty in all its forms and dimensions.





BİRÜNİ Community Prosperity System (BCPS)

Empowering Communities through Education, Entrepreneurship, and Social Innovation

At Biruni University, we believe that poverty cannot be eradicated by charity alone — it requires **knowledge, opportunity, and empowerment** working hand in hand.

Through the **Biruni Community Prosperity System (BCPS)**, the university mobilizes its academic expertise, human capital, and infrastructure to help local communities build **financially resilient and socially sustainable livelihoods**.

BCPS serves as an integrated social-innovation platform that connects students, researchers, local entrepreneurs, and policymakers around one shared goal:

to create a world where every individual and community has the tools, confidence, and network to thrive.

Community Entrepreneurship & Social Innovation Program

Purpose:

To support the creation and growth of local enterprises that are socially responsible, environmentally conscious, and economically sustainable — in line with SDG 1 (No Poverty), SDG 8 (Decent Work and Economic Growth) and SDG 9 (Industry, Innovation and Infrastructure).

Core Components

• Biruni Start & Sustain Accelerator

A community entrepreneurship initiative providing hands-on business incubation for aspiring entrepreneurs from disadvantaged groups, including women, refugees, and low-income families.

Participants receive:

- Entrepreneurship training workshops focused on community-based business models.

- One-on-one mentorship from Biruni faculty, alumni entrepreneurs, and business leaders.

- Access to Biruni Technopark co-working spaces, laboratories, and digital design studios for product prototyping.

- Sustainability Literacy Seminars on ethical business, circular economy, and social innovation.



• Local Impact Labs

Run in collaboration with Biruni Technopark and the Faculty of Engineering, these labs offer

mentorship and technical resources for small-scale innovators developing health, education, or green-technology solutions.

Annual “Social Innovation Challenge” awards micro-grants (₺10,000–₺50,000) to promising projects led by youth and women.

• Entrepreneurship & Resilience Workshops

Hosted regularly in partnership with local municipalities and chambers of commerce, covering topics such as business planning, financial literacy, branding, and digital entrepreneurship.

These sessions are free of charge for underrepresented or low-income participants.

Impact Highlights (Since 2022)

230+

Community Entrepreneurs
Participated in Biruni led
training or mentoring
programs.



70%

Women participators or
first time entrepreneurs

Over 30

Start-ups were
incubated through Biruni
Technopark with social or
environmental missions

Financial & Institutional Support for Community Enterprises

Biruni Social Innovation Fund

The University allocates an annual Community Micro-Grant Budget (₺500,000 per year) to support early-stage local enterprises addressing social or environmental challenges. Funds are distributed through transparent calls managed by the Institutional Impact Office in collaboration with Biruni Technopark and local NGOs.

Types of Financial Assistance

- Seed Funding: Direct micro-grants for idea validation and prototype development.
- Resource Sharing: Free or discounted access to university laboratories, 3D printing, and fabrication facilities.
- Service Grants: Accounting, legal consulting, and design mentoring provided pro bono by Business and Law faculty teams.
- Matchmaking Support: Connection with investors, municipal funding schemes, and CSR programs of partner companies.

Eligibility:

Social entrepreneurs, women-led cooperatives, youth initiatives, or graduates launching mission-driven enterprises in Türkiye.

Priority is given to ventures based in low-SEGE regions, disaster-affected areas, or employing individuals from vulnerable backgrounds.



Impact Indicators (2024-2025)

231

Community
Entrepreneurs
Trained

Metric: ≥ 200

31

Start-ups
Receiving
University Support

Metric: ≥ 25

70 %

Women-led or
Social Impact
Enterprises

Metric: $\geq 60\%$

Continuoust

Total Micro-Grants
Distributed

Metric:
£500,000 /
year

Educational Integration and Lifelong Learning

Biruni's faculties integrate community entrepreneurship directly into the curriculum:

- Service-Learning Courses: Students co-design projects with local NGOs to address real-world needs.
- Community Clinics: Faculties of Health Sciences, Dentistry, and Pharmacy provide free health education and consultations to underserved communities, linking well-being with economic resilience.
- Career & Innovation Workshops: Delivered by the Entrepreneurship and Career Center, helping graduates transition from ideas to viable businesses. All these initiatives contribute to a circular model of knowledge transfer — where university learning transforms directly into social progress and economic empowerment.



Institutional Partnerships and Governance

BCPS operates under the joint leadership of the Institutional Impact & Visibility Directorate and the Biruni Technopark, ensuring coordination between academic programs and community outreach.

Partnerships include:

- Municipalities and Chambers of Commerce (mentorship, local market access)
 - NGOs and Foundations (social inclusion and funding support)
 - Public Agencies (TÜBİTAK, KOSGEB, İŞKUR) (training, R&D, and SME incentives)
- All BCPS activities are tracked through the

Community Impact Dashboard, aligning outcomes with SDG 1, 4, 5, and 8.

Strategic Commitment

Biruni University views entrepreneurship not merely as an economic act, but as a vehicle for human dignity and sustainable social progress.

Through BCPS and its community-based start-up programs, the university transforms education into empowerment — bridging the gap between learning, earning, and living with purpose.

“We don’t just teach innovation — we share it.”

Biruni Health & Education Outreach

Transforming Knowledge into Access and Equity

At Biruni University, poverty is understood not only as economic deprivation but as a lack of access — to health, education, and opportunity.

Through the Biruni Health & Education Outreach (B-HEO) initiative, the university brings essential services directly to communities, empowering individuals to live healthier and more informed lives. These outreach efforts are integral to Biruni's mission of ensuring that science serves humanity and that every person, regardless of circumstance, can benefit from quality health and education.

Health Outreach & Preventive Care

Purpose: To deliver free preventive health services and raise public-health awareness among low-income communities.

Key Components

- **Mobile Health Clinics:** Led by the Faculty of Health Sciences, these field teams provide free basic screenings (blood pressure, glucose, BMI), oral-dental

checks, and health counselling across Istanbul and neighbouring provinces.

- **Biruni Dental Outreach:** Faculty of Dentistry teams visit public schools and orphanages to perform free oral-health examinations and



hygiene education.

- **Community Seminars:** Faculty experts and student volunteers from the Schools of Health Sciences, Pharmacy, and Education regularly organize free community seminars designed to raise awareness on essential

topics such as nutrition, hygiene, chronic-disease prevention, mental health, and women's wellbeing. These seminars are conducted in collaboration with municipal social centers, public schools, and NGOs, ensuring that information reaches those most affected by economic hardship and limited health literacy.

Impact (2024)

- 6 000 individuals received free health screenings and counselling.
- 1 500 children benefited from dental check-ups and hygiene sessions.
- 77 community health events were organized across low-SEGE districts.
- Specialized sessions for women, caregivers, and adolescents improved preventive-health behaviours and self-care awareness.

These activities not only improve wellbeing but also reduce the financial burden of healthcare for vulnerable families, directly supporting SDG 1 and SDG 3.

Education & Digital Inclusion

Purpose: To expand educational opportunity and digital literacy among children, parents, and educators in underserved areas.

Programs

- “Biruni for All” Digital Literacy Workshops: Free, hands-on sessions on computer use, online learning tools, and e-government literacy for students and caregivers. Delivered by Education and Engineering faculty and students.
- STEM Access Program - “Doctors of the Future”: Weekend workshops on campus introducing school-age children from low-income neighbourhoods to science, health, and technology careers. 1 800 participants to date.
- ParentCraft Community Series: Seminars that help parents support children’s nutrition, mental health, and learning resilience. 400+ caregivers trained.
- Teacher Inclusion Workshops: Short courses on trauma-informed and inclusive education for local schoolteachers; 120 teachers certified.
- Social Entrepreneurship for Access Lab:

A training series guiding young innovators to design affordable, scalable solutions that widen access to health or education. Projects receive mentorship from Biruni Technopark and may qualify for micro-grants through the Biruni Community Prosperity System (BCPS).



These initiatives translate academic knowledge into practical empowerment — creating pathways for lifelong learning and employment readiness.

Integrated Impact & Governance

All outreach activities are coordinated by the

Institutional Impact & Visibility Directorate with participation from the Faculties of Health Sciences, Dentistry, Education, and Engineering. Annual indicators tracked through the Community Impact Dashboard include:

- number of beneficiaries reached,
 - geographic coverage (SEGE districts),
 - number of trained volunteers and educators,
 - micro-projects incubated through BCPS.
- Results are published in the Access & Equity Progress Report, ensuring transparency and continuous improvement.

Strategic Commitment

Biruni University’s Community Outreach initiatives redefine poverty alleviation as empowerment through service.

By combining healthcare, education, and digital literacy, Biruni transforms outreach into systemic inclusion — a sustainable bridge between knowledge and human wellbeing.

“Real change begins where access meets compassion.”

“Love Grains” Cinema Event at Biruni: A Heartwarming Day by Biruni Genç İVEK

The volunteer students of Biruni Genç İVEK Community at Biruni University organized the project “Love Grains: Cinema Event at Biruni,” creating an unforgettable day for children without families. This event was more than just a film screening—it became a meaningful gathering where children felt valued, surrounded by love, and reconnected with their sense of social belonging. Throughout the event, the children enjoyed watching movies alongside Biruni students, participating in games, conversations, and delightful surprises in a warm and joyful atmosphere.

This initiative once again demonstrated the powerful impact of social solidarity and the culture of empathy. Activities organized for children without families hold immense importance, not only by offering a few hours of happiness but also by helping them feel that they are an integral part of society. The genuine engagement of the Biruni Genç İVEK Community touched the hearts of the children while reminding



university students of the transformative power of human connection, volunteerism, and spreading kindness.

Through this project, Biruni University proved that creating sustainable social impact does not always require large-scale initiatives—it can also be achieved through small yet profound gestures such as making a child smile or rekindling hope in a heart. This meaningful event stands as one of the warmest reflections of the university’s vision of “transforming knowledge into kindness,” leaving a lasting impression on both the community and the students.

Bridge to the Future: Books of Hope from Biruni PDR Community to a Village School in Diyarbakır

The Psychological Counseling and Guidance (PDR) Community of Biruni University carried out a social responsibility project titled “Bridge to the Future,” organizing a book donation campaign to establish a library for a village school in Diyarbakır. Rooted in the belief that access to knowledge is not a privilege but a fundamental right, the project aimed to provide children in underprivileged regions with equal learning opportunities. Thanks to the voluntary contributions of Biruni students, hundreds of books were collected and placed on the shelves of the village school, opening new windows of imagination and discovery for the children.

This meaningful initiative not only established a library but also built a bridge of hope for future generations. The efforts of the Biruni PDR Community reflected the determination of young people who believe in the transformative power of education and strive to reduce social inequalities through the sharing of knowledge. The new library became a space that nurtures imagination, keeps curiosity alive, and inspires children to shape their futures.

Through such projects, Biruni University continues to nurture students who not only achieve academic excellence but also act as socially responsible and value-driven individuals. The “Bridge to the Future” project reminded everyone that even a small step can create a profound change in a child’s life, building one of the most meaningful bridges between knowledge and hope.



4th Traditional USET Kindness Iftar: A Table of Sharing and Solidarity at Biruni

The International Health Ambassadors Community (USET) of Biruni University organized the 4th Traditional USET Kindness Iftar, bringing together students receiving

financial support in an atmosphere of unity and compassion. Held during the spiritual month of Ramadan, the event aimed to strengthen the culture of solidarity among students while reinforcing the spirit of sharing and togetherness.



The participation of students from various countries also reflected the university's multicultural identity and vibrant sense of community. More than a simple iftar gathering, the event created a social support environment where students connected, found encouragement, and strengthened their sense of belonging to the university.

Organized entirely on a voluntary basis by USET members, the program sought to reach every member of the university community in an equitable and inclusive way. In line with Biruni University's commitment to equal

opportunity, this meaningful event helped students receiving financial aid feel valued and supported in their academic journeys. The 4th Traditional USET Kindness Iftar stands as a powerful reflection of Biruni University's vision grounded in social justice, cultural diversity, and human values.

This gathering demonstrated that even a small table can bring people together, fostering bridges of empathy and solidarity — a simple yet deeply impactful example that has earned a lasting place in the university's institutional memory.

Support for Students in Istanbul from the Biruni Event Community: A Table of Unity, Sharing, and Solidarity

The Biruni University Event Community organized a meaningful Iftar Gathering for students residing in Istanbul who receive financial support. Held in the spiritual atmosphere of Ramadan, this event was more than just a meal; it served as an important space for moral support, solidarity, and belonging for students studying away from their families.

Initiated this year under the leadership of the Biruni Event Community, the iftar gatherings grew into a collective effort as six different student communities came together in the spirit of solidarity. With contributions from volunteer students across various faculties, each event reached different groups of students, bringing together hundreds of participants around a shared table. Every community took ownership of the process with its own resources, cultivating a culture of cooperation from preparation to service.

These iftar gatherings represented more than a shared dinner — they embodied Biruni University's strong commitment to equality of opportunity, student well-being, and community consciousness. Students from diverse cultures, cities, and backgrounds came together to experience a sense of unity that transcended the university's boundaries, creating an atmosphere of genuine connection and support.

This multifaceted initiative once again demonstrated that Biruni University's educational philosophy extends beyond academic success, embracing a holistic approach that values students' emotional and social needs. Sustained by six student communities, the initiative fostered a strong culture of volunteerism and social solidarity within the university.

With the participation of hundreds of students, these gatherings became a vivid reflection of Biruni University's dedication to nurturing not only

knowledge but also empathy, belonging, and mutual support—showcasing one of the finest examples of the transformative role educational institutions can play in social life.



“Goodness Fair” by the Biruni Young Goodness Community: An Event Touching the Wishes of Orphaned Children

Comprising volunteer students from Biruni University, the Biruni Young Goodness Community organized a meaningful event titled “Goodness Fair” to foster a culture of solidarity and sharing. Prepared with great dedication by students, the fair featured handmade crafts, books, food, and gifts — all sold to raise funds used to fulfill the wishes of orphaned children. Through their own creativity and effort, students transformed kindness into a tangible act that positively impacted others’ lives.

The most remarkable aspect of the fair was its foundation on collective solidarity and voluntary participation. Rather than merely hosting a charity event, participants experienced the transformative power of co-creation, sharing, and spreading hope. Throughout the process, students worked collaboratively, strengthening their sense of community while developing



teamwork and social responsibility skills. The proceeds from the fair were used to grant the wishes of children without families, marking the event’s most profound outcome. The smiles of those children became the most meaningful reward for the students’ efforts. Each gift represented not just an object, but a message of hope, compassion, and unity carried through the students’ commitment and empathy. In alignment with Biruni University’s socially engaged educational philosophy, the “Goodness Fair” stood as a powerful example of how student-led initiatives can cultivate social awareness and transform kindness into a sustainable way of living. This initiative demonstrated that even the smallest act, when driven by a sincere purpose, can generate a lasting impact — creating a deep sense of awareness and unity within the university community.

Introduction of the Foster Family and Adoption Service Model at Biruni University:

Biruni University has made a significant contribution to child welfare through its Foster Family and Adoption Service Model Introduction Event, which integrates academic insight with social responsibility while upholding every child's right to grow in a nurturing family environment. The event emphasized that foster care and adoption are not merely social service practices, but also deeply human, ethical, and structural processes that shape the future of society. By introducing this model, Biruni University has created a broad academic and public impact, marking a concrete step toward strengthening child welfare policies and ensuring sustainable family-based care.



The program provided participants with a comprehensive understanding of the child protection system by examining its functioning, national legislation, and areas for improvement. Academics, psychological counselors, social

workers, and students came together to discuss effective methods to promote accurate public understanding of foster care and adoption. Merging academic knowledge with field experience, the event fostered innovative approaches to protecting, supporting, and preparing children for the future.

Beyond introducing the model, Biruni University's academic staff initiated long-term studies to ensure its sustainable and effective implementation. Analyses conducted within the university have laid the groundwork for developing new strategies to enhance the training and coordination of professionals working in child welfare. Furthermore, community-oriented information sessions, field studies, and volunteer-based awareness projects have been designed, transforming foster care and adoption from a social responsibility practice

into an academically grounded child protection system.

The true significance of this initiative lies in its reinforcement of the notion that safeguarding children's right to grow in a secure and loving environment is not merely an individual choice but a collective public duty. Participants viewed foster parenting and adoption as transformative processes that enrich not only a child's life but also the moral integrity of society as a whole. The university's efforts in this field contribute on a national scale to improving the child protection system, expanding family-based care, and establishing evidence-based, sustainable service models.

Through this initiative, Biruni University has demonstrated

that higher education institutions are not only centers of academic learning but also agents of social transformation. The event redefined university-community collaboration by showcasing how the production of knowledge can directly translate into social benefit. The introduction of the Foster Family and Adoption Service Model stands as a pivotal step toward developing sustainable child protection policies, laying a lasting foundation for future research, education, and awareness initiatives.

With this comprehensive endeavor, Biruni University has gone beyond raising awareness — it has taken the lead in promoting a holistic model of social development centered on children's right to a dignified life. This initiative represents a vital contribution to building a stronger, more compassionate, and better-informed child protection system in Türkiye.



“Route to Goodness” Social Responsibility Project for Educational Equality and Health Awareness

Within the scope of the Route to Goodness social responsibility project carried out by the Biruni University USET Community, health screenings were conducted for students of Acırlı Fatih Primary School in Midyat, Mardin; hygiene education sessions were delivered, and engaging activities were organized with student participation. This comprehensive field initiative aimed to support access to basic health services for children living in disadvantaged regions while raising awareness about hygiene and preventive health habits. Closely aligned with SDG 1 – No Poverty, the project emphasized the importance of addressing health and education together as key components in reducing the impacts of poverty, thereby strengthening both the physical and social well-being of the students. The event represents a powerful example of Biruni University’s commitment to sustainability, social impact, and equal opportunity — embodying experiential learning and volunteer-driven engagement as central

elements of its educational philosophy.

The Power of Solidarity and Sharing: “Table of Goodness” Event

Organized by the Biruni University Yedihilal Community, the Table of Goodness event aimed to strengthen solidarity and sustain a culture of sharing by bringing together students in need of equal opportunities. During the event, students prepared and shared meals together, reinforcing a sense of community while fostering empathy and mutual support. In alignment with SDG 1 – No Poverty, this initiative promoted social inclusion and enhanced students’ awareness of volunteerism and social responsibility. The Table of Goodness stands as a strong reflection of Biruni University’s human-centered educational philosophy, which prioritizes ethical values, contributes to sustainable development, and nurtures students with a deep sense of social consciousness.



Book Donation Event for Educational Access and a Culture of Sharing

Organized by the Biruni University Trabzonspor Community, this event featured a book donation campaign in support of a primary school. The initiative aimed to promote reading habits among children and contribute to equal opportunities in education. The collected books were delivered to students with limited access to learning resources, expanding their opportunities for knowledge and strengthening their motivation to learn. Aligned with SDG 1 – No Poverty, the project raised awareness about reducing poverty through education and emphasized the importance of social solidarity. As a meaningful example of Biruni University's commitment to sustainable development, a culture of sharing, and socially impactful learning, the event also reinforced students' sense of volunteerism and community engagement.



“Biruni CENG Students’ Iftar” Event for Equal Opportunity and Solidarity

Organized by the Biruni University Technology and Information Engineering Club, the “Biruni CENG Students’ Iftar” aimed to bring together students in need of equal opportunities to strengthen solidarity, sharing, and a sense of social unity. During the event, students gathered around the same table, fostering an atmosphere of empathy and mutual support while raising awareness about promoting social equality through education. In line with SDG 1 – No Poverty, this social initiative reinforced social bonds among individuals and enhanced university students’ awareness of volunteerism and social responsibility. The **“Biruni CENG Students’ Iftar”** reflected Biruni University’s vision of inclusivity, sustainable development, and social welfare, helping young people internalize the values of sharing and solidarity.



Sharing Meal Event for Social Solidarity and Equal Opportunity

Organized by the Biruni University Occupational Therapy Club, the Sharing Meal Event aimed to strengthen social bonds and sustain a culture of solidarity by bringing together students in need of equal opportunities. During this meaningful gathering, held throughout the academic year, students spent time together, reinforcing their sense of belonging and fostering a community atmosphere grounded in sharing and empathy. In alignment with SDG1 – No Poverty, the event highlighted the importance of social support mechanisms not only in material terms but also through their human and emotional dimensions. Reflecting Biruni University’s inclusive, sustainable, and socially impactful educational vision, this initiative enhanced students’ awareness of social responsibility and strengthened their commitment to solidarity.



Institutional Collaborations and Social Support Practices for Poverty Reduction

In line with SDG 1 – No Poverty, Biruni University aims to strengthen social welfare and facilitate access to essential services for individuals facing economic challenges through its comprehensive social support policies. Within this framework, the university has established a sustainable social impact network by forming strategic partnerships with more than 100

institutions and organizations, supporting equal opportunities in both education and healthcare. Through collaborations carried out primarily via Biruni University Hospitals, discounted and facilitated access to healthcare services is provided for employees of partner institutions and their families—enhancing service utilization rates while reducing the impact of financial barriers on quality of life. This initiative extends beyond hospital-based

services, incorporating community-oriented social responsibility projects that reach broader segments of society. By implementing the principle of institutional solidarity—one of the key pillars of sustainable development—Biruni University presents a model that integrates education, health, and social support to effectively address the multidimensional aspects of poverty.





In line with SDG 1 – No Poverty, Biruni University aims to strengthen social welfare and facilitate access to essential services for individuals facing economic challenges through its comprehensive social support policies. Within this framework, the university has established a sustainable social impact network by forming strategic partnerships with more than 100 institutions and organizations, supporting equal opportunities in both education and healthcare. Through collaborations carried out primarily via Biruni University Hospitals, discounted and facilitated access to healthcare services is provided for employees of partner institutions and their families—enhancing service utilization rates while reducing the impact of financial barriers on quality of life. This initiative extends beyond hospital-based services, incorporating community-oriented social responsibility projects that reach broader segments of society. By implementing the principle of institutional solidarity—one of the key pillars of sustainable development—Biruni University presents a model that integrates education, health, and social support to effectively address the multidimensional aspects of poverty.

Strategic Collaborations with Local Governments



Biruni University maintains formal cooperation with the Municipalities of Zeytinburnu, Bakırköy, and Küçükçekmece, aligning municipal development agendas with university-led social innovation frameworks. Through BCPS's Policy Studio, Biruni co-develops evidence-based Community Wellbeing Action Plans that target urban poverty, health equity, and employment resilience.

- With Zeytinburnu Municipality, the University acts as a policy and data partner for urban inclusion initiatives, contributing its expertise in socio-economic mapping and health data analysis to identify high-risk zones and underserved households.
- With Bakırköy Municipality, Biruni supports the local Inclusive Employment and Social Enterprise Council, providing training for social entrepreneurship and

designing incentive frameworks for women-led cooperatives.

- With Küçükçekmece Municipality, the collaboration focuses on Health for All programmes, expanding preventive-care access, nutrition awareness, and digital literacy among low-income families. All policy proposals are reviewed by the Equality & Inclusion Committee to ensure intersectionality, gender sensitivity, and accessibility for individuals with disabilities or refugee status. Through these alliances, the University directly contributes to municipal poverty-reduction strategies, transforming academic data into actionable local policies.

Institutional and Social Solidarity Agreements

The Biruni University Faculty of Medicine Hospital serves as a key driver of equitable healthcare access through over thirty institutional solidarity agreements with unions, public bodies, schools, and private enterprises.

These agreements provide discounted or subsidised medical services for thousands of workers, educators, and low-income families, helping reduce out-of-pocket healthcare expenses—a major poverty determinant in urban areas.

Key partnerships include:

- Trade Unions: TES-İŞ, PETROL-İŞ, TÜRK-İŞ, ÖZ ORMAN İŞ, TALPA, Hürriyetçi Büro Sen, Sağlık-İş.

- Public & Civil Organisations: Zeytinburnu Kaymakamlığı, İstanbul İl Jandarma Komutanlığı, İstanbul Barosu, İBÇD, TÜMFED, ZÜCDER.

- Educational Partners: Oğuzkaan Kolejleri, Uğur Okulları, Bilim Koleji, Cezeri Okulları, Era Koleji, Feza Koleji, Florya Koleji, İsalet Okulları.



- Corporate and Media Partners: Aksu Vital, Tempo Otel, Onvo, Bağkart, Zen Pırlanta, Türk Medya, Ekol Medya, Uras Holding, Würth Türkiye.

Through these agreements, hospital services are made financially accessible to a broad demographic base, with 15–40 % discounts on outpatient care, diagnostics, and specialist consultations. In addition, preventive screenings, health education workshops, and family well-being seminars are offered twice yearly to partner institutions free of charge.

These partnerships also act as a data source for BCPS's Health Equity Monitor, helping to map socio-economic determinants of health within the local community and informing Biruni's research-based recommendations to public authorities.

Biruni Community Prosperity System(BCPS) and Multisector Collaboration



BCPS provides the overarching structure linking all partnerships to a unified sustainability framework. It operates four main tracks—Start & Sustain, Seed & Scale, Access Essentials, and Policy Studio—each integrating public and private actors.

- Under Start & Sustain, local entrepreneurs and cooperatives—especially women, refugees, and youth—receive free entrepreneurship education, design-thinking workshops, and mentorship from faculty and industry professionals.

- Seed & Scale delivers micro-grants (₺20 000–₺100 000) to financially and socially sustainable ventures, with funds monitored by the Institutional Impact Office.

- Access Essentials provides community training in health, education, water sanitation, and digital literacy, directly improving access to basic services for low-income residents.

- The Policy Studio ensures that the insights and outcomes of all partnership programmes are transformed into data-driven recommendations for municipal and national decision-makers.

Partnerships in Practice: A Shared Prosperity Model

The Biruni partnership ecosystem operates on the principle that every collaboration—whether a municipal protocol, a hospital contract, or a corporate cooperation—must create measurable social benefit. Each partner contributes to one or more of the following dimensions:

- Access Equity: reducing cost barriers in health and education;
 - Economic Empowerment: supporting entrepreneurship and employability;
 - Policy Transformation: embedding BCPS data in local governance;
 - Community Resilience: strengthening families through health, education, and wellbeing programmes.
- All partnership outputs are monitored via the BCPS Partnership Dashboard, which records reach, inclusivity indicators, and financial equity outcomes. Annual reports are submitted to the Institutional Impact, Visibility & Global Reputation Directorate, integrating SDG-aligned metrics into the University's global performance system.



Broader Institutional Commitment

Through this comprehensive partnership structure, Biruni University not only supports individuals but also transforms systems. By linking municipal collaboration with union solidarity and private-sector participation, it demonstrates how higher education institutions can serve as anchors of local prosperity.

Each cooperation agreement underpins Biruni's strategic commitment to eliminate poverty in all its forms—financial, educational, and health-related—while advancing SDG 1 (No Poverty), SDG 3 (Good Health and Well-Being), SDG 4 (Quality Education), and SDG 17 (Partnerships for the Goals).



SDG Related Courses

Poverty and Social Work Course – Turning the Classroom into an Experience

Biruni University contributes concretely to the Sustainable Development Goals through its practice-based education model in poverty reduction and social work. The “Poverty and Social Work” course offers an innovative learning experience that enables students to understand poverty not only through theoretical frameworks but also through direct observation of real-life conditions in the field. Designed in alignment with the United Nations Sustainable Development Goal 1 (SDG 1: No Poverty), the course nurtures students as socially aware individuals capable of addressing complex societal issues.

The course content approaches poverty as a multidimensional issue—beyond mere



income deprivation—encompassing inequalities in education, health, employment, and gender. Students analyze structural causes of poverty using UNDP reports, TÜİK data, and current academic sources. Through this process, they develop a holistic perspective on poverty’s economic, social, and cultural dimensions, preparing them to

design more comprehensive social service interventions.

Consistent with Biruni University’s social responsibility vision, the learning process is reinforced through field-based experiences. Students collaborate with municipalities and NGOs across Istanbul, engaging in volunteer activities and observations in social assistance centers, soup kitchens, and food banks. These field studies allow them to perceive poverty not as a statistic but as a human experience, deepening their empathy and reinforcing values of human dignity—the very foundations of social work.

A participating student reflected: “When I joined the fieldwork, I realized poverty is not just about lacking money. Many of the people I met most needed to be understood. This process helped me better understand both my profession and humanity.” This statement encapsulates the transformative impact of the course on students’ professional and personal development.

By integrating education, research, and community engagement, Biruni University's "Poverty and Social Work" course establishes lasting awareness and commitment toward poverty reduction. The university's approach bridges academic knowledge with lived experience, empowering students not only with professional competence but also with the motivation to drive social change. Education here becomes more than knowledge transfer—it becomes a practice of social responsibility that uplifts both individuals and communities.

Science-Driven Educational Collaboration for Social Impact
"Bilimin Aydınlığında Zeytinburnu (BAZ&25)" Project Support and Academic Contribution

As part of Biruni University's commitment to the United Nations Sustainable Development Goals—particularly SDG 4 (Quality Education) and SDG 10 (Reduced Inequalities)—the university entered into a formal cooperation

protocol with the Zeytinburnu District Directorate of National Education to support the project "Bilimin Aydınlığında Zeytinburnu, 2025 - BAZ&25."

Conducted between January 20 and July 20, 2025, this initiative integrated academic knowledge into public



education settings, reflecting Biruni University's mission to promote scientific literacy and equal learning opportunities. Within this framework, the Faculty of Education provided field-based academic support, educational materials, and expert-led seminars designed to expand access to contemporary scientific understanding and strengthen pedagogical

capacity across district schools.

The collaboration emphasized the transformative power of science in social development, allowing education students and faculty to contribute to community-level educational advancement through applied learning. By engaging directly with public institutions and young learners in Zeytinburnu, participants gained first-hand experience in fostering inclusive, science-centered educational environments—bridging theory and practice while cultivating a sense of social responsibility.

Through initiatives like BAZ&25, Biruni University extends its academic mission beyond the classroom, empowering future educators and supporting equitable educational access. This synergy between higher education and community needs exemplifies the institution's holistic approach to SDG-aligned teaching—where learning becomes a catalyst for sustainable social change.

Community Life-Long Learning

Seminar on Education and Equal Opportunity in Poverty Reduction

Organized by Biruni University, the Seminar on Education and Equal Opportunity in Poverty Reduction aimed to help students understand the structural causes of poverty and recognize the transformative role of education in promoting social change. With the participation of expert academics in the field, the seminar facilitated comprehensive discussions on the significance of education policies in addressing economic inequalities,

approaches to ensuring equal opportunities, and sustainable development models. Closely aligned with the United Nations Sustainable Development Goal 1 (SDG 1: No Poverty), this event heightened students' awareness of poverty-related issues and enhanced their ability to develop knowledge-based solutions. Reflecting Biruni University's commitment to social justice, sustainability, and social responsibility, the seminar served as a tangible example of an educational approach that cultivates globally conscious individuals equipped to contribute to equitable and inclusive development.



Empowering Lives, Building Sustainable Futures

At Biruni University, we believe that poverty is not simply the absence of income — it is the absence of opportunity, dignity, and choice.

Guided by the United Nations Sustainable Development Goals, we are committed to creating pathways that enable individuals and communities to rise beyond systemic barriers.

Through inclusive education, evidence-based research, and community-driven initiatives, Biruni University transforms knowledge into real-world empowerment.

Our mission is to ensure that every person — regardless of background — has access to the tools, skills, and networks needed to lead a life of stability and purpose.

From scholarships and mentorship programs to local development partnerships and policy engagement, we work across disciplines and sectors to break the cycle of poverty and foster long-term resilience. Biruni University's approach unites science, empathy, and innovation — proving that sustainable change begins when education and opportunity meet.



Support Systems for Students from Low-Income Families

Biruni University ensures that no student's academic journey is interrupted because of financial hardship.

Aligned with SDG 1 (No Poverty), the university has established a coordinated ecosystem of campus-based social and financial support programs designed to meet essential needs—food, housing, transportation, healthcare, and legal guidance—so that every student can complete university with dignity and stability.

Food & Wellbeing Program

Purpose: To eliminate food insecurity and promote physical and mental wellbeing among financially disadvantaged students.

Components:

- Share-a-Meal System: Through the Biruni App, students, staff, and alumni can anonymously donate prepaid meals. These digital meal credits are automatically transferred to verified low-income students' ID cards and redeemed at campus cafeterias.
- Biruni Food Bank: Operated jointly with local NGOs and municipalities, the bank distributes monthly food packages to students in verified need and collects surplus food from dining halls, reducing waste and supporting SDG 12 (Responsible Consumption and Production).
- Wellbeing Hub: A multidisciplinary center offering;
 - Free psychological counselling and psychotherapy sessions;
 - Group therapy and stress-management workshops;

Mindfulness and breathing session;

“Peer Support Circles” facilitated by trained

Wellbeing Ambassadors;

24/7 Crisis Line for emergencies.

- Awareness & Education: Nutrition literacy seminars, healthy-eating workshops, and mental-health campaigns (“It’s Okay to Pause”) led by Peer Wellbeing Ambassadors from the Psychology

Department.

Impact:

Over 700 students receive food or wellbeing support annually; the goal is to eliminate food insecurity among all registered B-ACCESS students by 2027.



Housing Assistance Program

Purpose: To guarantee safe, affordable, and stable accommodation for low-income students.

Support Mechanisms:

- Priority Dormitory Placement: Students with verified economic need receive priority placement in university-affiliated dormitories. FOTO
- Discounted Dormitory Fees: The university subsidizes part of the housing cost through the Biruni Solidarity Fund, reducing monthly expenses by 20–40 percent.
- Emergency Housing Support: Short-term accommodation is provided for students facing family, economic, or health crises.
- Housing Advisory Service: The Student Affairs Department guides students on safe rental options and tenant rights, preventing exploitation or unsafe living conditions.

Impact:

In 2024, 28 percent of dormitory residents benefited from partial or full housing support.



Transportation Support Program



Purpose: To ensure that financial hardship or commuting distance never prevents attendance.

Free Shuttle System:

Biruni University operates a comprehensive, free shuttle network as part of its daily campus operations:

- **Dormitory–Campus Line:** Continuous free shuttle service runs between university-affiliated dormitories and the main campus, ensuring that students living in residence

halls can reach classes safely and punctually.

- **Campus–Public Transit Connector:** Throughout the day, free university shuttles operate on a loop connecting the campus with nearby Marmaray, Metrobus, Bus, and Tramway stations. These frequent routes enable easy transfers for students commuting from different districts of Istanbul.
 - **Accessibility Priority:** Vehicles are low-floor and equipped for students with mobility challenges.
- Financial Support:

For students residing outside shuttle zones, the university provides public-transport allowances or assists with discounted fare registration through cooperation with the Istanbul Metropolitan Municipality (İBB).

Impact:

More than 1,200 students use the free shuttle system daily, saving an average of ₺600–₺800 per month in transport costs—critical relief for low-income households.

Legal & Social Support Program

Purpose:

To provide accessible guidance for students facing legal or administrative difficulties linked to economic vulnerability.

Services:

- Legal Advisory Desk: Offers free consultation on tenancy, employment, and scholarship-related issues.
- Psychological & Social Counselling: Delivered through the Wellbeing Hub, ensuring integrated mental-health and social-support services.
- Monitoring & Equity: The Equality and Inclusion Committee supervises all support mechanisms to guarantee transparency, fairness, and zero discrimination in service delivery.



Student Employment & Financial Aid Program

Purpose:

To empower students through self-sufficiency and reduce dropout risk caused by financial pressure.

Key Components:

- Student Employment Scheme: Provides on-campus part-time jobs (administrative assistance, library, labs, digital content production) for students with financial need.
- Biruni Scholarship System: Includes need-based, merit-based, and emergency grants, as well as transportation and meal vouchers.
- External Partnerships: Collaborations with philanthropic foundations and NGOs supply additional scholarships and stipends for underprivileged students.

Impact:

Each year, over 450 students receive financial or employment-based support through these combined initiatives.



Health & Medical Support Program



Purpose:

To ensure every student, regardless of financial background, can access healthcare and preventive services.

Services:

- On-Campus Infirmary (Revir): Offers free basic health services, first aid, and medical consultations for students, alumni, staff, and visitors.
- University Hospital & Dental Hospital Discounts: All students, alumni, their families, and university employees benefit from up to 70% discounts on medical and dental services at Biruni University Hospital.
- Preventive Care & Wellbeing Integration: Regular health checks, hygiene education, and referral coordination with the Wellbeing Hub

for psychosomatic cases or chronic conditions.

- Mental-Health Integration: Free counselling, group therapy, and psycho-education workshops as part of the Wellbeing Hub framework.

Impact:

In 2024, over 6,000 individuals (students, staff, alumni, and families) benefited from medical or mental-health services through the University's healthcare system.

B-ACCESS — Biruni Access & Social Equity System



The New Framework for Widening Participation and Human Equity in Higher Education

The B-ACCESS Program is not a scholarship; it is an institution-wide ecosystem that integrates financial, academic, psychological, and infrastructural mechanisms to remove barriers to higher education.

It operationalizes Biruni University's founding belief that science must serve humanity, ensuring that every learner — regardless of background — can access, persist, and succeed.

Vision

B-ACCESS redefines access as the ability not only to enter higher education, but to complete it.

Rooted in Biruni's human-centered philosophy, it guarantees that economic or social circumstance never limits academic potential.

The system aligns directly with SDG 1 (No Poverty), SDG 4 (Quality Education), SDG 5 (Gender Equality) and SDG 10 (Reduced Inequalities), making inclusion a measurable institutional responsibility.

Strategic Pillars

1 Access – Expand participation for students from the bottom 20 % of household income, low-SEGE districts, earthquake-affected regions, refugees, first-generation families, and students with disabilities.

2 Retention – Ensure that every student who begins their journey at Biruni receives the academic, psychosocial, and financial support required to graduate.

3 Equity – Bridge opportunity gaps through integrated aid, inclusive learning, gender balance, and fair employment practices.

4 Social Resilience – Empower beneficiaries to become agents of change who model empathy, leadership, and community impact.

Core Structures and Programs

1. B-ACCESS Scholarship System

Guarantees that financial hardship never prevents talented students from continuing their education.

- Tuition Support: 25 %–100 % waivers, renewable annually.

- Living Assistance: Monthly subsidies for housing, meals, and transportation; digital-device grants.

- Priority Model: Students from the lowest 20 %, KYK/VGM recipients, or those affected by national emergencies.

- Extended Support: Emergency micro-grants, research and travel funds.

Goal: By 2029, 20% of undergraduates and 12 % of postgraduates will complete their degrees with full academic and economic security.

2. Work-Study Model

Transforms financial aid into empowerment: students work 10–20 hours per week in labs, libraries, administrative offices, or Biruni Technopark start-ups.

Participants gain income,

professional skills, and employability experience while receiving mentoring in time-management and financial literacy.

Outstanding students join the Future Fellows Network for graduate internships and career placement.



3. Biruni Mentorship Bridge

Each B-ACCESS student is paired with a faculty mentor and a peer mentor for continuous guidance; students with special needs receive an additional psychological mentor through the Wellbeing Hub.

Structured mentorship cycles (orientation → growth → reflection → transition) build resilience and self-efficacy.

By 2029, Biruni targets an $\geq 85\%$ continuation rate among B-ACCESS participants.

4. Accessible Campus Initiative

Ensures that every individual — regardless of ability — experiences full autonomy on campus.

- 100 % architectural and digital accessibility compliance.
- Adaptive classrooms, accessible dorms and prayer rooms.
- Annual Accessibility Audit Report and mandatory inclusive-design training for faculty and staff.

5. Social Inclusion Labs (SILs)

Student-driven innovation hubs that



translate empathy into action.

Interdisciplinary teams receive ₺10 000 micro-grants to design social-impact projects linked to the SDGs. Selected projects are showcased at the Biruni Social Impact Forum and supported for incubation through Biruni Technopark.

Eligibility & Prioritization Framework

A multi-evidence model ensures fairness and alignment with Türkiye's social realities.

Eligibility: At least two of the following — low income (bottom 20 %), regional disadvantage (SEGE 5–6 or disaster zone), first-generation status, or financial hardship.

Priority Groups: Orphans, veteran/martyr children, students with disabilities (self or family), caregivers, single-parent families, and foster-care graduates.

Applications are verified confidentially by the Equality & Inclusion Commission, Student Affairs, and Financial Aid Units under Türkiye's Personal Data Protection Law (KVKK).

Graduation and Completion Targets (2026-2029)

78%

Year-to-Year Retention (1 → 2)

Annual retention rate among low-income students.

Target: ≥ 85%

52%

On-Time Graduation (4 years)

Standard completion rate within program duration.

Target: ≥ 60%

65%

Graduation +1 year

Extended completion rate including flexible learning pathways.

Target: ≥ 75%

47%

Female Completion (SDG 5)

Gender-balanced graduation outcomes.

Target: ≥ 50% parity

83%

Students with Disabilities (SDG 10)

Success rate within accessibility framework.

Target: ≥ 90% continuation

Caregiver/Orphan Cohort (SDG 1)

Measured within B-ACCESS monitoring dashboard.

Target: ≥ 80% retention

Completion Support Mechanisms

1 Academic Continuity Program – Early-warning tracking of attendance and GPA; personalized mentoring and remedial modules.

2 Financial Stability Framework – Secures all aid (tuition, housing, meals, transport) for the degree duration; emergency micro-grants for crises.

3 Mentorship & Wellbeing Support – Dual mentorship model plus free counselling and stress-management sessions through the Wellbeing Hub.

4 Work-Study & Employability Pathways – Paid on-campus roles that build financial security and career readiness.

5 Data-Driven Intervention – Quarterly Equality & Inclusion Commission reports identify risk groups; supports activated before semester breaks.

Monitoring & Public Reporting

Progress is evaluated annually through the Access & Equity Progress Report, tracking

retention and graduation by income, gender, disability, and region.

All data are verified by the Institutional Impact Office and published openly on Biruni's Sustainability Portal.

Strategic Commitment

B-ACCESS transforms financial aid into a long-term social contract for success. Biruni University's goal is clear: economic hardship will never determine academic outcome.

Every student who enters Biruni will have a supported path to completion, employment, and personal growth.

“Access opens the door — but completion changes lives.”



B-GASS — Biruni Global Access & Solidarity Scholarship Programme

Purpose:

To expand equitable access to higher education for students from low and lower-middle-income countries, enabling them to study, live, and thrive at Biruni University with dignity and opportunity.

The programme operates under the principle that education is a human right and solidarity is the bridge that sustains it.

What B-GASS Offers

B-GASS provides a comprehensive ecosystem of financial, academic, and psychosocial support that removes the most common barriers faced by disadvantaged international students.

- Full or Partial Tuition Scholarships covering 50–100 % of educational costs throughout the study period.

- Living Support Packages including subsidized housing, affordable meals, free campus transportation, and grants for books or digital devices.

- Work-Study Opportunities within university labs, libraries, and Biruni Technopark, helping students gain professional experience while earning income.

- Wellbeing & Counselling Services through the Biruni Wellbeing Hub, offering free mental-health sessions, peer-support groups, mindfulness, and stress-management programmes.

- Emergency & Humanitarian Aid for students facing sudden crises — including loss, displacement, or medical challenges.

- Mentorship & Academic Coaching through the Biruni Mentorship Bridge, pairing each student with both a faculty mentor and a peer mentor for academic and

emotional guidance.

- Career Development Support, including CV-building labs, internship placements, and employer networking opportunities.

Each component is designed to remove a specific barrier — together, they create a sustainable foundation for academic success and personal growth.

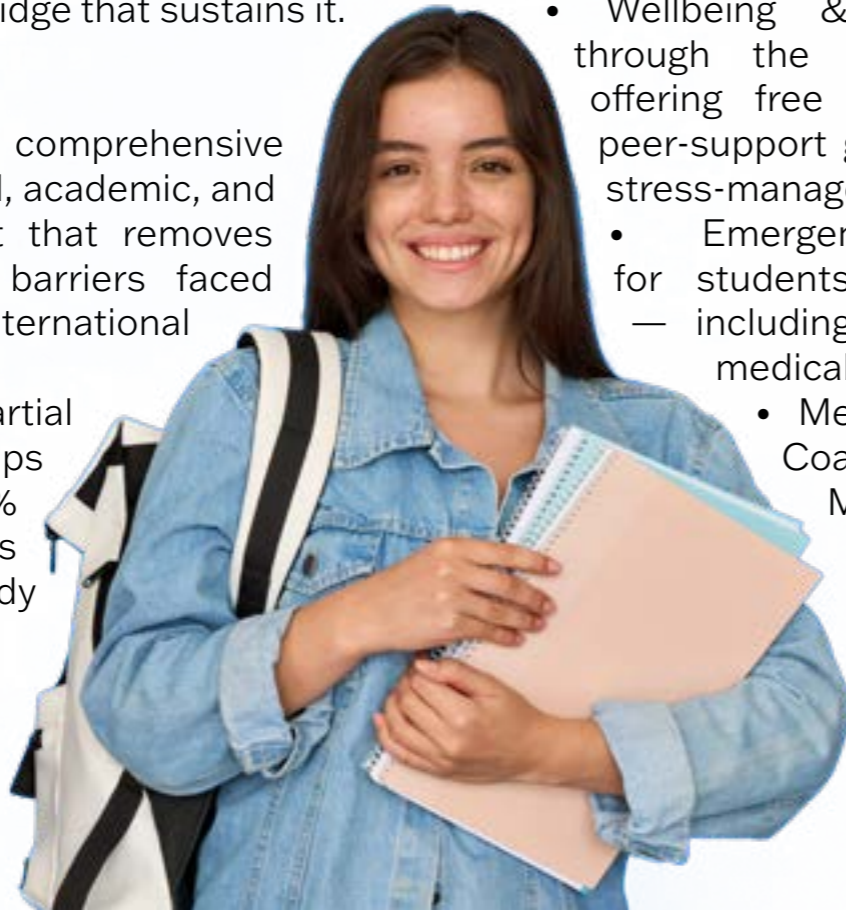
Who Can Apply

B-GASS welcomes applications from students who:

- Hold citizenship from a World Bank-listed low or lower-middle-income country;
- Demonstrate financial need or social vulnerability (verified through embassy, NGO, or official documentation);
- Meet the academic admission requirements of Biruni University.

Priority is given to:

- Students from conflict-affected or disaster-stricken regions;
- Orphans and children of veterans or martyrs;



- Students with disabilities or those serving as caregivers;
- First-generation university students;
- Women in science, technology, engineering, or health sciences.

Tracks Within the B-GASS Framework

1. Global Solidarity Scholarship

For outstanding international students demonstrating academic excellence and financial need.

Provides full or partial tuition coverage and living support, renewable annually.

2. Humanitarian Scholarship

Dedicated to students affected by war, conflict, or forced displacement.

Includes full tuition waiver, language preparation, and psychosocial care through the Wellbeing Hub.

3. Women in Science Fellowship

Empowers female students from developing regions to pursue careers in health sciences, engineering, and technology through targeted scholarships, mentoring, and leadership training.

4. International B-ACCESS Track

Integrates Biruni's domestic B-ACCESS

retention model for international students — combining affordability, work-study, mentorship, and wellbeing services into one inclusive framework.

Our Global Commitment

By 2029, Biruni University aims to:

- Support at least 10 % of its international students through B-GASS or co-funded programmes;
 - Achieve ≥ 90 % retention and ≥ 70 % graduation among B-GASS scholars;
 - Reach ≥ 40 % participation of women from developing countries in STEM programmes;
 - Establish 15 international partnerships contributing to the Biruni Global Solidarity Fund.
- Progress toward these targets is monitored annually through the Global Access & Inclusion Report, ensuring transparency, accountability, and continuous improvement.



Institutional Vision

B-GASS embodies Biruni University's belief that global solidarity begins with shared learning.

Through this programme, the University transforms compassion into structure — providing not charity, but justice in education.

Institutional Commitment

Biruni University treats student welfare as an operational priority, not a charitable extension.

Through coordinated campus programs in food, housing, transportation, legal, financial, and health domains, the university provides a systemic safety net that enables low-income students to complete their education successfully.

All initiatives are monitored annually by the Student Affairs Department and the Equality and Inclusion Committee, ensuring accountability, transparency, and continuous improvement.