



15 LIFE
ON LAND



Message From the Rector

In an era when the world faces mounting environmental, social, and economic challenges, the role of universities has become more vital than ever. Institutions of higher education are not only centers of learning but also agents of transformation — shaping knowledge, values, and actions that define the future of our planet and humanity.

At Biruni University, we embrace this global responsibility with determination and vision. Guided by the United Nations Sustainable Development Goals (SDGs), we are committed to advancing sustainability through excellence in education, innovative research, and community-centered impact.

Our mission extends beyond academic achievement; it is about producing knowledge that heals, transforms, and sustains life in all its forms.

As a pioneering health sciences university, we channel our scientific expertise toward creating solutions that enhance well-being and social equity. Our multidisciplinary approach allows us to integrate health, innovation, and sustainability — transforming research into real-world benefits for people and communities. The projects and studies we carry out, particularly in the fields of medicine, health, and technology, stand as concrete reflections of this commitment.

Our understanding of sustainability transcends academic boundaries. It is woven into the fabric of our campuses, hospitals, and community initiatives — from energy efficiency and environmentally friendly infrastructure to nurturing students with the awareness and capacity to become responsible global citizens.

Through the dedication of our academic and administrative teams, and the unwavering support of our partners, Biruni University continues to build a resilient, inclusive, and sustainable future. Together, we reaffirm our pledge to serve humanity through science and compassion — today and for generations to come.



Prof. Dr. Adnan Yüksel
Rector, Biruni University

Message From the Editor

The world is entering an age of profound transformation — one that demands wisdom as much as it demands action. Climate disruption, social fragmentation, and economic imbalance have made it clear that the systems which once defined progress can no longer sustain it. Humanity needs a new compass — one that points toward balance, compassion, and collective renewal.

Universities stand at the very heart of this change. They are not merely institutions of teaching and research; they are the laboratories of humanity's future — places where science, conscience, and purpose must meet.

At Biruni University, we see sustainability not as a goal to be reached, but as a way of being. It is the thread that weaves through our research, our classrooms, our hospitals, and our partnerships. It is how we measure success —

by the difference we make in people's lives and the legacy we leave for the generations to come.

Guided by the **United Nations Sustainable Development Goals**, we are reimagining higher education as a force for healing — for reconnecting human progress with planetary well-being, for bridging innovation with empathy, and for transforming knowledge into impact.

Our mission is both scientific and moral: to cultivate minds that create, question, and care; to generate ideas that build a more equitable, peaceful, and sustainable world. Every discovery, every collaboration, every act of learning becomes part of a larger story — the story of humanity's renewal through knowledge.

This report is more than an evaluation of where we stand; it is a reflection of who we choose to be. Biruni University stands as a living commitment

to the idea that education can heal, science can serve, and together we can build a future worthy of hope.



Aslıhan Güzin ALSAN, P.h.D. FHEA
Director of Institutional Impact,
Visibility and Corporate Reputation



BİRÜNİ UNIVERSITY COMMITMENT TO LIFE ON LAND

The Earth's landscapes are more than the ground we walk on - they are the living networks that sustain air, food, medicine, and meaning. Forests, soils, and species form the intricate fabric of life itself. To protect them is not an act of charity; it is an act of continuity - an acknowledgment that human life depends on the health of all living systems.

At Biruni University, we embrace Sustainable Development Goal 15: Life on Land as both a scientific priority and a moral responsibility. We believe that the future of humanity and the planet are bound by the same thread: the preservation of biodiversity, ecosystems, and the delicate balance that sustains them.

Our mission is to nurture ecological literacy and environmental stewardship across disciplines - to prepare generations who see nature not as a resource to be used, but as a partner to be understood. As a health sciences university, we recognize that human health cannot exist apart from environmental health. The air we breathe,

the food we consume, and the stability of our societies are all rooted in the vitality of the Earth. Through education, research, and sustainable

effort contributes to a single goal: to protect life in all its forms.



This report reflects our belief that caring for the Earth is not a single action, but a way of living — one that honors interdependence, resilience, and respect for the continuum of life.

campus practices, Biruni University works to restore the connection between people and planet. From soil conservation and tree planting to data-driven sustainability management, every

Our Approach: Protecting Nature Through Knowledge and Action

At Biruni University, our approach to SDG 15 is grounded in scientific rigor and ethical responsibility. We understand that protecting terrestrial ecosystems requires collaboration between education, policy, and everyday behavior.

Our guiding principles are Conservation, Restoration, and Education.

- **Conservation:** We protect green spaces within and around our campuses, ensuring that biodiversity is valued and preserved through sustainable land management practices.
- **Restoration:** We contribute to ecological regeneration through tree-planting programs, habitat preservation, and pollution mitigation initiatives.
- **Education:** We embed environmental awareness into the curriculum, empowering students to become advocates for sustainable living and nature-based solutions.

Our vision is to create a university culture where the protection of life on land is not a project, but a mindset — one that unites science, empathy, and action.



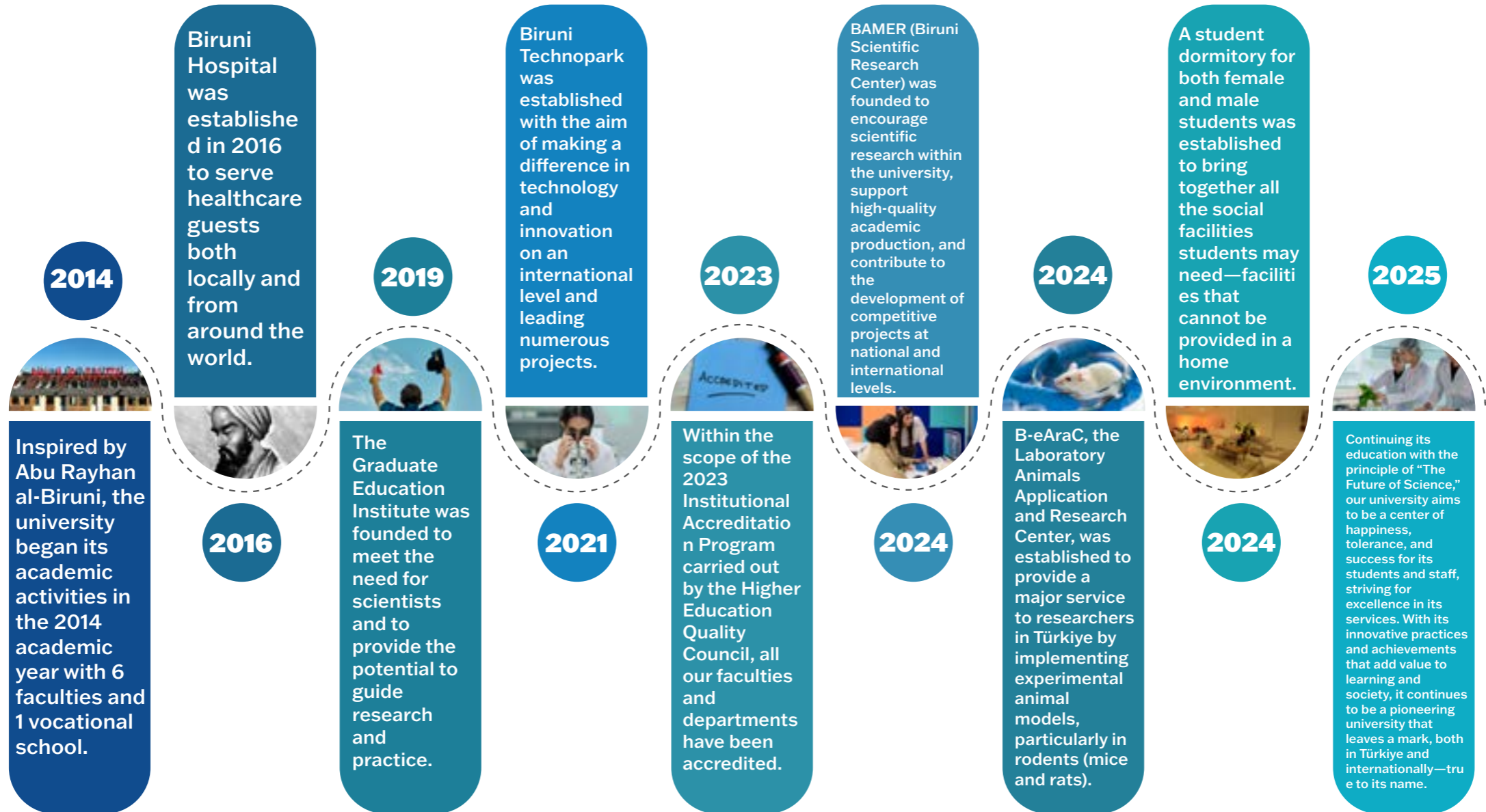
Institutional Framework: Integrating Biodiversity into University Life

Biruni University's sustainability framework for SDG 15 connects institutional governance with practical impact.

- **Green Campus Initiatives:** The university maintains and expands green areas, emphasizing native plant species, biodiversity corridors, and urban ecology practices.
- **Research and Monitoring:** Interdisciplinary projects focus on soil health, ecosystem restoration, and sustainable resource management — turning data into policy recommendations.
- **Sustainable Infrastructure:** Construction and landscaping follow environmentally responsible standards that minimize habitat disruption and promote natural regeneration.
- **Community Partnerships:** Collaborations with municipalities, NGOs, and environmental groups support tree planting, waste reduction, and biodiversity awareness campaigns.
- **Environmental Education and Advocacy:** Training sessions, seminars, and public outreach foster ecological literacy and collective responsibility for land preservation.

At Biruni University, we see every patch of land as a classroom and every living organism as a teacher. Sustainability, in our view, begins when we remember that humanity is not above nature — we are within it.

O U R S T O R Y



O u r V i s i o n

To be a pioneering university that, true to its name, leaves a lasting mark — leading change through knowledge, innovation, and impact.

O u r M i s s i o n

To be an innovative and leading university that cultivates qualified individuals through transformative education, produces original knowledge at both national and international levels, and contributes to solving societal challenges with scientific and ethical responsibility.

C O R E V A L U E S



K n o w l e d g e

Commitment to learning, discovery, and the pursuit of truth as the foundation of progress.



W i s d o m

Using knowledge with depth, reflection, and ethical judgment to serve humanity.



H u m a n i t y

Placing human dignity, empathy, and compassion at the heart of education, research, and service.



A c a d e m i c F r e e d o m

Protecting the right to think, question, and create freely within an environment of respect and integrity.



P i o n e e r i n g S p i r i t

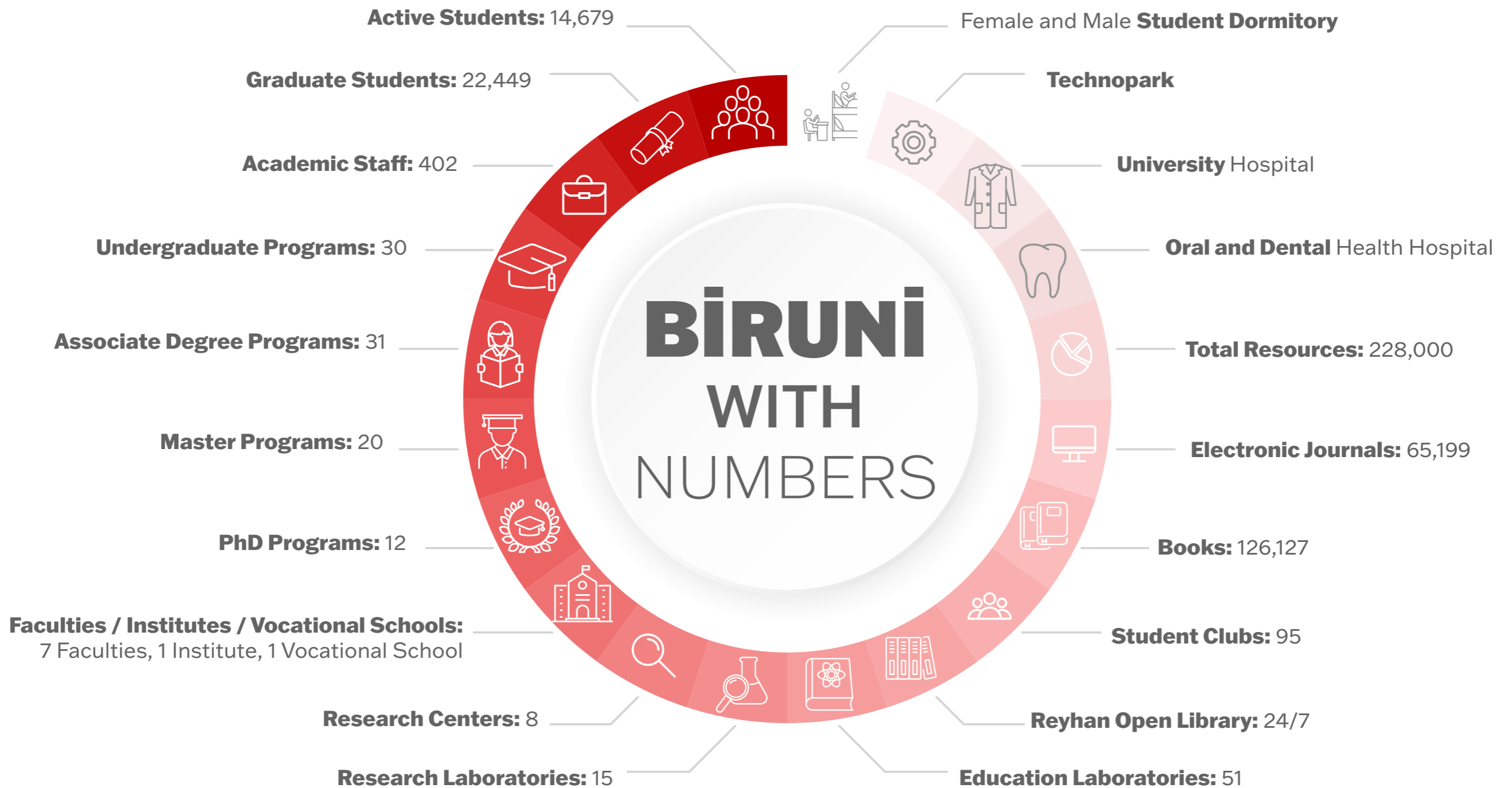
Challenging conventions with creativity and vision; leading transformative change in education and science.



C o u r a g e

Acting with integrity and resilience in the face of uncertainty — daring to stand for what is right and meaningful.

BİRÜNİ WITH NUMBERS



Waste Management And Reduction Of Environmentally Harmful Products Policy

Biruni University adopts environmental sustainability as an institutional responsibility and implements a comprehensive policy focused on waste management and the reduction of environmentally harmful products. This policy aims to establish a sustainable campus environment through efficient use of natural resources, reduction of waste at its source, promotion of recycling, and the implementation of eco-friendly practices across all university activities. The University is committed to raising environmental awareness among all stakeholders and creating a campus ecosystem aligned with sustainability principles.

Core Values

Biruni University's Waste Management and Reduction Of Environmentally Harmful Products Policy is based on the following core values:

1. Sustainability: Ensuring efficient use of natural resources to preserve the environment for future generations.
2. Environmental Leadership: Promoting practices that set an example for society in

waste management.

3. Innovation and Technology: Integrating environmentally responsible technologies into waste processes.



4. Community Engagement: Encouraging participation of students, employees, and stakeholders.
5. Ethical Responsibility and Transparency:

Ensuring transparent and accountable environmental management.

6. Environmental Education: Increasing awareness through continuous training and activities.

7. Social Responsibility: Supporting environmental improvement beyond campus boundaries.

Waste Management and Reduction Of Environmentally Harmful Products Policy Strategies

Biruni University implements the following strategies to support social development and increase access to education:

1. Evaluation of Current Practices: Updating strategies based on global best practices and guidelines.
2. Waste Segregation and Planning: Ensuring proper source-based segregation and recycling.
3. Budget and Resource Planning: Allocating resources for effective waste management.
4. Implementation of the PDCA Cycle:

Ensuring continuous improvement of processes.

5. Healthy and Safe Conditions: Maintaining safe waste management environments.

6. Monitoring Technological Developments: Using up-to-date technologies in waste processes.

7. Source Reduction: Minimizing use of disposable materials.

8. Safe Disposal: Ensuring proper disposal outside the university.

9. Education and Awareness: Conducting regular environmental training.

Goals

Biruni University’s Waste Management and Reduction of Environmentally Harmful Products Policy are:

1. Waste Reduction: Minimizing waste creation and limiting single-use products.

2. Zero Waste Target: Increasing recycling rates toward a long-term zero-waste model.

3. Energy and Water Conservation: Implementing sustainable consumption projects.

4. Reduction of Harmful Substances: Promoting eco-friendly alternatives.

5. Raising Environmental Awareness: Enhancing responsibility through education.

6. Innovative Recycling Projects: Supporting university-led recycling initiatives.

7. Green Campus Vision: Reducing carbon footprint and improving green standards.

8. Collaboration and Social Contribution: Developing partnerships for sustainability.

9. Inclusive Approach: Encouraging stakeholder participation in waste processes.

10. Continuous Monitoring and Improvement: Regular evaluation of performance indicators.

Progress toward policy goals is monitored regularly, and corrective actions are taken based on collected data. The policy is reviewed continuously to support a sustainable and environmentally responsible campus.



“Biruni Dentistry Goes Green” – A Joint Project with Zeytinburnu Municipality Directorate of Technical Affairs



Aim:

To promote urban greening and environmental awareness within the university community by developing collaborative green spaces through a joint initiative between Biruni University Faculty of Dentistry and Zeytinburnu Municipality, contributing to biodiversity conservation and sustainable campus development.

Description:

This project involves the design, planting, and maintenance of green areas around the Biruni University Dentistry campus in cooperation with local government authorities. Implemented with the support of the Zeytinburnu Municipality Directorate of Technical Affairs, the initiative seeks to increase vegetation density, improve air quality, and enhance local biodiversity in urban areas. In addition to the environmental benefits, the project engages students and staff in hands-on sustainability practices, such as tree planting and landscape care, fostering a culture of ecological responsibility and community collaboration.

Impact:

The project strengthens the connection between urban ecosystems, education, and community action. It serves as a model for university-municipality partnerships that promote environmental stewardship and sustainable land management. By expanding green spaces in dense urban settings, the initiative supports carbon sequestration, noise reduction, and habitat creation while providing restorative green areas for students and residents.

SDG 15 Contribution:

Aligned with SDG 15: Life on Land, this project contributes to Target 15.1 (ensuring the conservation and sustainable use of terrestrial ecosystems) and Target 15.9 (integrating ecosystem and biodiversity values into planning and education). By embedding environmental restoration and green infrastructure within the university's activities, it supports the protection of natural resources and the promotion of sustainable urban ecosystems through community-based environmental engagement.

Being a Pharmacist in an Animal Hospital

The event titled “Being a Pharmacist in an Animal Hospital,” organized by the Biruni University Faculty of Pharmacy Student Society (BIRUPSA), created an interdisciplinary platform highlighting the multifaceted role of pharmacy in the field of animal health and showcasing contemporary practice examples. Within the scope of the event, key themes such as strengthening a sustainable health ecosystem through collaboration between veterinary medicine and pharmacy, responsible medicine management, environmentally conscious production, and animal welfare were discussed in an integrated manner.

In this respect, the event was directly associated with Sustainable Development Goal 15: Life on Land, as it emphasized the protection of biodiversity and the ethical responsibilities toward animal health. Through this initiative, Biruni University once again demonstrated its pioneering approach to sustainable living, evidence-based awareness, and socially impactful professional education.



Pawsome Friends Charity Bazaar: Community-Based Support for Biodiversity and Animal Welfare



In alignment with Biruni University’s mission of sustainability and social impact, the Biruni University Animal Rights Society organized the “Pawsome Friends Charity Bazaar” on 09 April 2025 to contribute to Sustainable Development Goal 15 (Life on Land). This community-based experiential learning activity aimed to raise awareness about terrestrial biodiversity and animal welfare, while all proceeds were dedicated to the care and treatment of stray animals. The event encouraged strong student participation and showcased a notable example of inclusivity through collaborations with individuals requiring personal support. Through such social-impact initiatives, Biruni University not only provides financial assistance but also reinforces ethical responsibility and sustainable living practices as integral components of university culture.

Pawsome Friends Festival: Campus Biodiversity Management and Social Inclusion

Within the scope of its sustainability and social impact vision- and as part of its institutional commitment to Sustainable Development Goal 15 (Life on Land)-Biruni University hosted the “Pawsome Friends Festival” on 07 May 2025, organized by the Animal Rights Society. This community-focused activity created a local model for the protection of terrestrial life by setting up stands to fund the treatment and feeding costs of campus cats, an integral part of the campus ecosystem. With strong student participation, the event served as an experiential learning initiative that equipped students with practical skills in resource generation and animal-welfare management. Additionally, the event area was arranged to ensure participation of individuals with personal support needs, emphasizing the principle of inclusivity and enhancing social awareness on both animal rights and equitable participation. Through this initiative, Biruni University reaffirmed its commitment to campus biodiversity and sustainable ecological stewardship.



Operational Support for Biodiversity: Sustainability Commitment Through Campus Animal Welfare



The “Helping Our Hayhak Friends Charity Bazaar,” held on 26 February 2025 by the Biruni University Animal Rights Society to fund the medical treatment and feeding expenses of campus cats, represents a tangible application of the university’s social-impact and operational-sustainability vision. This event directly supports SDG 15: Life on Land by mobilizing resource creation and community engagement toward a biodiversity-protection cause. Generating funds for the welfare of stray and campus animals fosters essential public awareness regarding the protection of local species and the importance of providing them with a respectful living environment. The bazaar offered students a hands-on project-management experience, strengthening experiential learning and promoting a culture of empathy-based inclusivity. Such operational activities demonstrate Biruni University’s dedication to safeguarding all living beings on campus and contributing to global sustainability goals through localized action.

Institutional Preparedness for Terrestrial Ecosystems: Strengthening Forest Well-Being Through Student Volunteering

The “Forest Volunteer Training,” organized by the Biruni University Search and Nature Sports Society in the university’s conference hall, stands out as a critical operational-preparedness activity supporting the university’s sustainability and social-impact mission. Directly aligned with SDG 15: Life on Land, the training aimed to equip students with knowledge and skills related to forest-ecosystem conservation, emergency response, and sustainable resource management. This student engagement initiative, delivered through non-formal education, transformed theoretical knowledge into practical application, creating a robust experiential-learning platform. By actively involving participants in the protection of terrestrial biodiversity and forest resources, the program raised institutional capacity as well as broader public awareness. This activity demonstrates Biruni University’s commitment to environmental stewardship and inclusivity while strengthening societal resilience against natural disasters and ecological degradation.



Ethnobotany Society: Terrarium Workshop as an Operational Model for Biodiversity Awareness



The Terrarium Workshop conducted in collaboration between the Biruni University Ethnobotany Society and the Fatih Municipality reflects the university's commitment to environmental awareness and operational sustainability within the framework of SDG 15: Life on Land. This experiential learning activity enabled participants to observe plant life cycles closely by creating closed micro-ecosystems, while highlighting the importance of biodiversity conservation in urban environments. The collaboration—driven by student engagement—expanded the university's social-impact outreach and contributed to the applied dissemination of sustainability principles. The event also brought together students from different disciplines in line with the principle of inclusivity, serving as an operational environmental-education model that provided a concrete understanding of the fragility and protection needs of terrestrial ecosystems.

Local Ecosystem Support: Shelter Visit Operation and Animal-Welfare Commitment Through Student Engagement

The “Kurtaran Ev Shelter Visit,” organized by the Biruni University Animal Rights Society, represents a significant volunteer activity that embodies the university’s social-impact mission and its operational contribution to SDG 15: Life on Land. This visit provided students with firsthand insight into the operational needs of local animal shelters and created a strong experiential learning environment. Student volunteers participating in the basic care and rehabilitation processes of the animals enhanced public awareness and facilitated the practical adoption of ethical sustainability principles. Such direct-service activities expand the culture of inclusivity and incorporate the welfare of off-campus animals into the university’s broader social-impact domain. The event highlights Biruni University’s commitment to creating positive, sustainable impact within the local ecosystem through the mobilization of both institutional resources and student participation.



Operational Integration of Veterinary Pharmacy into Land-Life Management: Professional Training by the Pharmacy Society



The Terrarium Workshop conducted in collaboration between the Biruni University Ethnobotany Society and the Fatih Municipality reflects the university's commitment to environmental awareness and operational sustainability within the framework of SDG 15: Life on Land. This experiential learning activity enabled participants to observe plant life cycles closely by creating closed micro-ecosystems, while highlighting the importance of biodiversity conservation in urban environments. The collaboration-driven by student engagement-expanded the university's social-impact outreach and contributed to the applied dissemination of sustainability principles. The event also brought together students from different disciplines in line with the principle of inclusivity, serving as an operational environmental-education model that provided a concrete understanding of the fragility and protection needs of terrestrial ecosystems.

Institutional Sustainability Commitment: Policy Development for the Protection of Terrestrial Life Through the Partnership Between Biruni University and Zeytinburnu Municipality

In line with its vision of establishing strategic partnerships with local governments and strengthening its leadership in social impact, Biruni University has developed a collaboration protocol with the Zeytinburnu Municipality Directorate of Public Works to support the achievement of Sustainable Development Goal 15 (Life on Land). This policy-level partnership concretizes the university's institutional sustainability commitment and contributes to the development of local action plans focused on the conservation, restoration, and sustainable use of terrestrial ecosystems. The inclusion of individuals requiring personal support in joint experiential learning activities and fieldwork under this collaboration has strengthened the university's mission of inclusivity. Through the transfer of academic expertise into public service and the enhancement of community awareness supported by student engagement, this partnership has elevated Biruni University's environmental social impact capacity within the region.



Membership and Contribution to the North American Association for Environmental Education



North American Association for Environmental Education Membership (2023–present)

The membership of Biruni University academic staff member Firdevs Burçak in the North American Association for Environmental Education (NAAEE) represents a significant example of international academic collaboration that strengthens global knowledge exchange in environmental learning, nature education, and sustainability. Through this membership, the university has gained access to global standards in environmental education and contributed to the dissemination of ecological awareness and nature-integrated teaching practices across its academic environment. Directly associated with Sustainable Development Goal 15: Life on Land, this participation holds strategic importance in advancing biodiversity protection, supporting nature-based learning approaches, and integrating environmental responsibility into academic education processes. With this membership, Biruni University has positioned itself among the leading institutions actively engaged in the global sustainability network in the field of environmental education.

Roots of Resilience: The Power of Nature in Inclusive Education - Nigeria

In collaboration with Lilysoya Childcare in Nigeria, Biruni University delivered the seminar titled “Roots of Resilience: The Power of Nature in Inclusive Education” on 09 April 2025, offering an academic perspective on the transformative role of nature within inclusive learning environments. The seminar emphasized how nature-based learning approaches enhance students’ psychosocial resilience, environmental awareness, and social integration. Conducted in alignment with Sustainable Development Goal 15: Life on Land, this initiative contributed to the advancement of nature-integrated educational methodologies and the cultivation of environmentally responsible individuals. Through this event, Biruni University demonstrated a strong example of academic responsibility, creating meaningful impact in the fields of sustainable education and social inclusion on a global scale.



Outdoor Learning in Action: Case Studies from Turkey & U.S. - Copenhagen KP International Week 2025



During Copenhagen KP International Week 2025, Biruni University faculty members presented “Outdoor Learning in Action: Case Studies from Turkey & U.S.” on 08 April 2025, sharing comparative case analyses on the pedagogical impacts of outdoor learning practices. The presentation showcased scientific evidence on how nature-based learning supports students’ cognitive, emotional, and social development, underscoring that environmentally integrated education models serve as a foundation for a sustainable future. Directly linked to Sustainable Development Goal 15: Life on Land, this contribution highlights Biruni University’s commitment to sustainability, environmental awareness, and high-quality education through international academic collaboration, reinforcing its role in advancing global perspectives in these fields.

Biruni University approaches campus life not only as an educational environment but also as an ecosystem living in harmony with nature. The University conducts all its activities in accordance with sustainability principles to protect biodiversity, maintain ecosystem integrity, and support animal welfare.

All activities are planned under the coordination of the Sustainability and Data Assessment Office and implemented in collaboration with faculties, student clubs, local governments (municipalities), and non-governmental organizations. The activities are regularly monitored, and sustainability performance is measured through annual evaluation reports.



Biodiversity and Awareness Activities

In the 2024–2025 academic year, numerous awareness-raising activities were organized under the theme of “terrestrial life.” These activities were carried out with active participation from students and academic units, contributing to the development of awareness about interacting with nature.

- Forest Volunteer Training (March 2024):

The training, attended by 60 students, provided information on forest ecosystem functioning, fire prevention strategies, and wildlife conservation. Students who successfully completed the training received a “Forest Volunteer Certificate.”

- Terrarium Workshop (April 2024): In cooperation with the Fatih Municipality, 45 students participated in the workshop. Participants engaged in practical activities focusing on plant adaptation in urban ecosystems and increasing indoor biodiversity.

- HAYHAK Spring Fair (May 2024): The event, attended by 300 students and faculty members, raised 20,000 TRY to support the

treatment and feeding of street animals.

- Kurtaran Shelter Visit (October 2024): Twenty-five students volunteered at the Kurtaran Shelter, providing 200 kg of pet food and medical

included interactive sessions on animal rights, living in harmony with nature, and ecosystem awareness. At the end of the event, participants signed a “Commitment to Coexistence.”

All these activities were coordinated by the Sustainability and Data Assessment Office. Photos, announcements, and reports of the events were shared publicly on the University’s sustainability website.

Biruni University adopts the preservation of local biodiversity as a core principle in all campus planning and development processes. For new building, infrastructure, or landscape projects, Environmental Impact Assessment (EIA) procedures are rigorously implemented to ensure environmental sustainability and maintain ecosystem integrity. Within this framework, potential impacts of project areas on local flora and fauna are carefully analyzed, and

supplies. The activity raised awareness about animal welfare and responsible pet ownership.

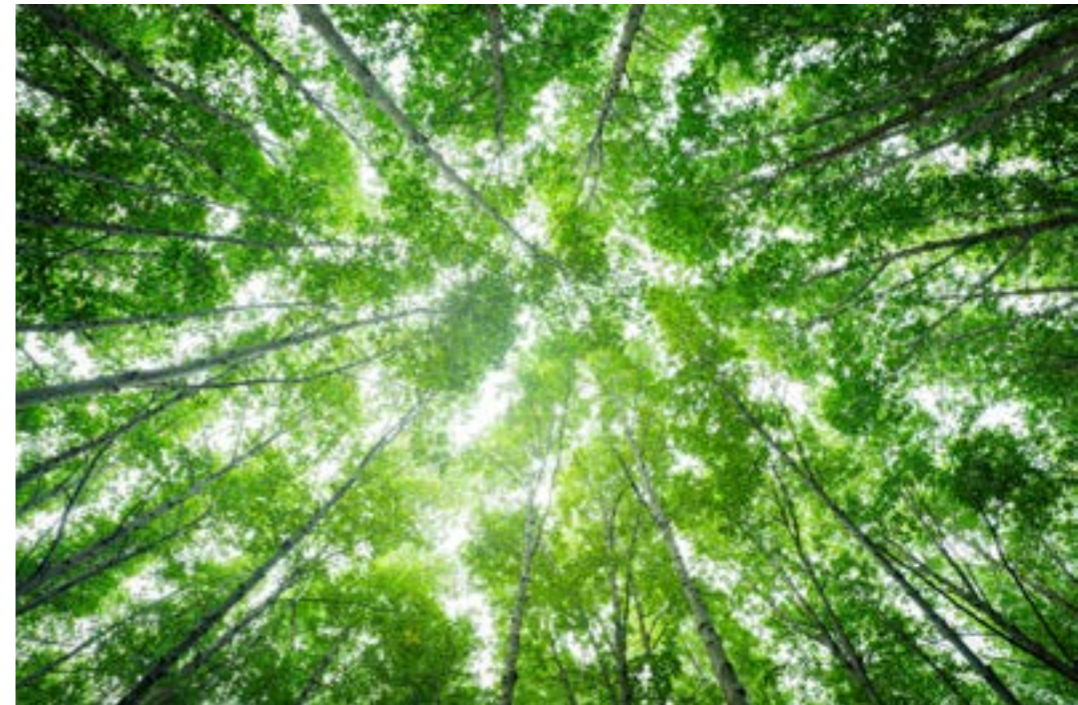
- Patili Dostlar Festival (December 2024): The festival, attended by 250 participants,

measures such as afforestation, green space protection, preservation of native vegetation, and strengthening ecological balance within the campus are integrated into the planning process.

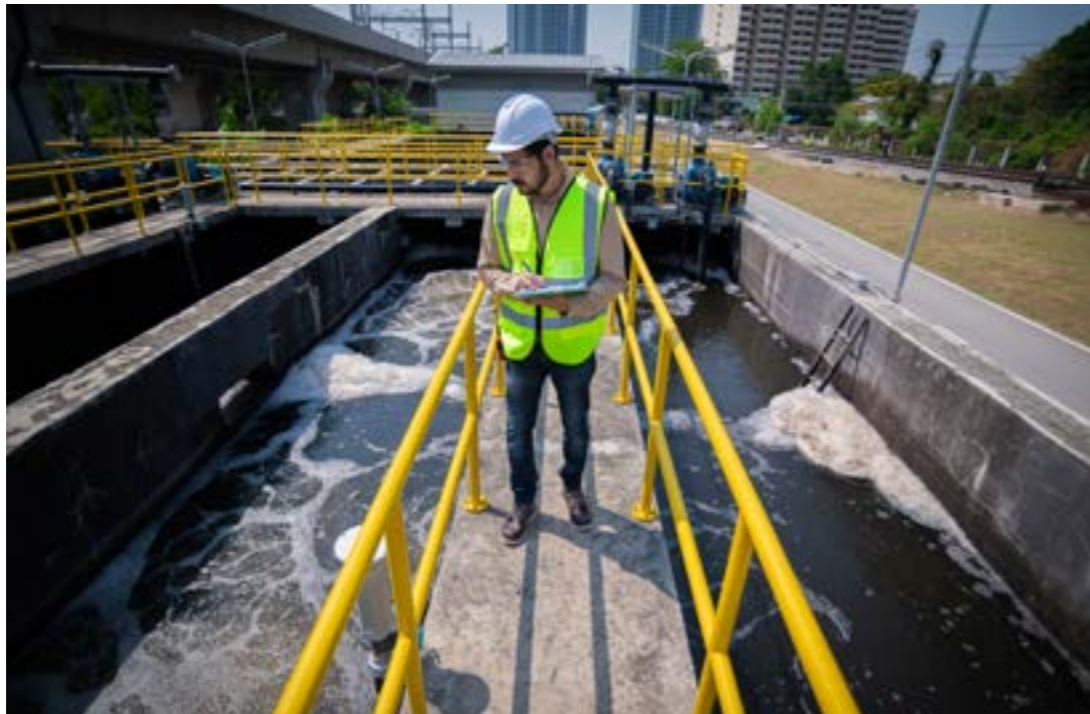


Furthermore, in collaboration with the Zeytinburnu Municipality, initiatives on waste management, recycling, and ecosystem restoration are carried out, contributing to the conservation of regional biodiversity.

Biruni University actively engages with local communities to protect and sustainably manage shared terrestrial ecosystems. In line with our commitment to environmental responsibility, a strategic partnership has been established with the Zeytinburnu Municipality. Within this framework, collaborative initiatives are implemented focusing on environmental conservation, waste management, recycling, and ecosystem-friendly practices. Through this partnership, the University provides education to the local community on sustainable waste management and environmental awareness, supporting tangible goals such as reducing waste, increasing recycling rates, and conserving natural resources. These joint projects aim to minimize the negative impacts of human activities on ecosystems and contribute to the long-term preservation of local terrestrial ecosystems.



Wastewater Management and Quality Standards



Biruni University has adopted an environmentally conscious infrastructure management approach and established a Wastewater Management Procedure. Within this scope, wastewater from laboratories and hospitals is treated with pre-treatment systems, such as oil traps and pH balancing tanks, before being discharged into the municipal sewer system.

Samples are analyzed quarterly, and results are compared with the limit values specified in national environmental regulations. Analysis results for 2024 fully complied with environmental management criteria.

Plastic Waste Reduction Plan and Refill Campus Initiatives

Launched in 2024, the Plastic-Free Campus Plan aims to reduce single-use plastics and promote sustainable consumption habits across the campus. Key measures include:

- Banning single-use straws, cups, and plastic bottles,
- Installing over 40 water refill stations across the campus,
- Distributing reusable water bottles to students and staff.

Additionally, a Refill Campus Week event was organized to strengthen public awareness. As a result, single-use plastic consumption decreased by 40%, and 5 tons of plastic waste were recycled annually.



Water Quality Monitoring



The Faculty of Engineering and Natural Sciences conducts seasonal sampling at rainwater drainage points around the campus. Physical, chemical, and biological parameters of water are measured, and results are evaluated in terms of water quality, reuse potential, and ecosystem health, then reported to the Sustainability Office. This process provides an essential monitoring mechanism for protecting and sustainably managing water resources.

Volunteer Programs

Biruni University students strengthen environmental awareness not only theoretically but also through active participation.

- **Green Volunteers Program:**
In coastal and campus clean-up activities attended by 250 students, 2 tons of waste were collected. Participants received a “Green Volunteer Certificate” to recognize their efforts in promoting environmental responsibility.
- **Patili Dostlar Award Program:**
Students actively involved in animal welfare and environmental volunteering projects received certificates of appreciation and badges. This initiative aims to reinforce sustainability awareness among students.



Stakeholder Collaborations



Biruni University has developed strong stakeholder collaborations to advance sustainable development goals. These partnerships aim to raise environmental awareness both locally and internationally:

- Zeytinburnu Municipality: 50 linden trees planted as part of the Faculty of Dentistry Afforestation Project.
- Fatih Municipality: Co-organizer of the Terrarium Workshop.
- HAYHAK Association and Kurtaran Shelter: Joint volunteer projects focused on animal welfare.
- NAAEE (North American Association for Environmental Education): Collaboration in international environmental education and awareness initiatives.

Conclusion

Biruni University considers the protection of terrestrial ecosystems not only as an environmental goal but also as an ethical responsibility and part of its institutional identity.

Through wastewater management, plastic reduction, biodiversity activities, volunteer programs, and water quality monitoring, the University has created a holistic campus model that operates in harmony with nature. These efforts demonstrate Biruni University's tangible contributions to a sustainable future under SDG 15 – Life on Land.

