



16 PEACE, JUSTICE
AND STRONG
INSTITUTIONS



Message From the Rector

In an era when the world faces mounting environmental, social, and economic challenges, the role of universities has become more vital than ever. Institutions of higher education are not only centers of learning but also agents of transformation — shaping knowledge, values, and actions that define the future of our planet and humanity.

At Biruni University, we embrace this global responsibility with determination and vision. Guided by the United Nations Sustainable Development Goals (SDGs), we are committed to advancing sustainability through excellence in education, innovative research, and community-centered impact.

Our mission extends beyond academic achievement; it is about producing knowledge that heals, transforms, and sustains life in all its forms.

As a pioneering health sciences university, we channel our scientific expertise toward creating solutions that enhance well-being and social equity. Our multidisciplinary approach allows us to integrate health, innovation, and sustainability — transforming research into real-world benefits for people and communities. The projects and studies we carry out, particularly in the fields of medicine, health, and technology, stand as concrete reflections of this commitment.

Our understanding of sustainability transcends academic boundaries. It is woven into the fabric of our campuses, hospitals, and community initiatives — from energy efficiency and environmentally friendly infrastructure to nurturing students with the awareness and capacity to become responsible global citizens.

Through the dedication of our academic and administrative teams, and the unwavering support of our partners, Biruni University continues to build a resilient, inclusive, and sustainable future. Together, we reaffirm our pledge to serve humanity through science and compassion — today and for generations to come.



Prof. Dr. Adnan Yüksel
Rector, Biruni University

Message From the Editor

The world is entering an age of profound transformation — one that demands wisdom as much as it demands action. Climate disruption, social fragmentation, and economic imbalance have made it clear that the systems which once defined progress can no longer sustain it. Humanity needs a new compass — one that points toward balance, compassion, and collective renewal.

Universities stand at the very heart of this change. They are not merely institutions of teaching and research; they are the laboratories of humanity's future — places where science, conscience, and purpose must meet.

At Biruni University, we see sustainability not as a goal to be reached, but as a way of being. It is the thread that weaves through our research, our classrooms, our hospitals, and our partnerships. It is how we measure success —

by the difference we make in people's lives and the legacy we leave for the generations to come.

Guided by the **United Nations Sustainable Development Goals**, we are reimagining higher education as a force for healing — for reconnecting human progress with planetary well-being, for bridging innovation with empathy, and for transforming knowledge into impact.

Our mission is both scientific and moral: to cultivate minds that create, question, and care; to generate ideas that build a more equitable, peaceful, and sustainable world. Every discovery, every collaboration, every act of learning becomes part of a larger story — the story of humanity's renewal through knowledge.

This report is more than an evaluation of where we stand; it is a reflection of who we choose to be. Biruni University stands as a living commitment

to the idea that education can heal, science can serve, and together we can build a future worthy of hope.



Aslıhan Güzin ALSAN, P.h.D. FHEA
Director of Institutional Impact,
Visibility and Corporate Reputation



BIRUNI UNIVERSITY COMMITMENT TO PEACE, JUSTICE AND STRONG INSTITUTIONS

Peace is the foundation upon which every form of progress stands. Without justice, knowledge loses its integrity; without strong institutions, compassion loses its continuity. A sustainable world cannot be built on instability — it requires fairness, transparency, and trust.

At Biruni University, we recognize Sustainable Development Goal 16: Peace, Justice and Strong Institutions as the moral backbone of all other goals. We believe that education and governance are inseparable forces in shaping ethical societies. To teach science without teaching conscience is to leave the world half prepared for its future.

Our mission is to cultivate integrity at every level of learning and leadership — to nurture individuals who think critically, act responsibly, and lead with empathy. As a university grounded in the health sciences, we understand that well-being is not only physical, but social and institutional. Healthy systems require ethical decision-making, accountability, and mutual

respect. Through our governance structures, academic programs, and community partnerships, we



strive to model the values we teach: fairness, inclusion, transparency, and participation. We believe that universities must not only produce knowledge but embody the justice they wish to

see in society. This report reflects our ongoing effort to strengthen the culture of ethical leadership and institutional trust — to ensure that peace and justice are not abstract ideals, but lived realities within our community and beyond.

Our Approach: Building Integrity Through Education and Governance

At Biruni University, our approach to SDG 16 is rooted in the conviction that peace and justice begin with awareness and accountability. We see institutions as living systems — strengthened not by power, but by principle.

Our philosophy rests on three foundational dimensions: Ethics, Transparency, and Participation.

- **Ethics:** We integrate ethical education across disciplines, ensuring that students, faculty, and administrators act with responsibility and respect in all professional and social contexts.
- **Transparency:** We maintain open communication, equitable decision-making, and accessible information systems that foster institutional trust.
- **Participation:** We promote inclusive governance, encouraging collaboration across academic and administrative bodies, and empowering individuals to contribute to the university's vision.

We believe that peace is not maintained by silence, but by dialogue; and that justice is not achieved by policy alone, but by consistent, values-driven practice.



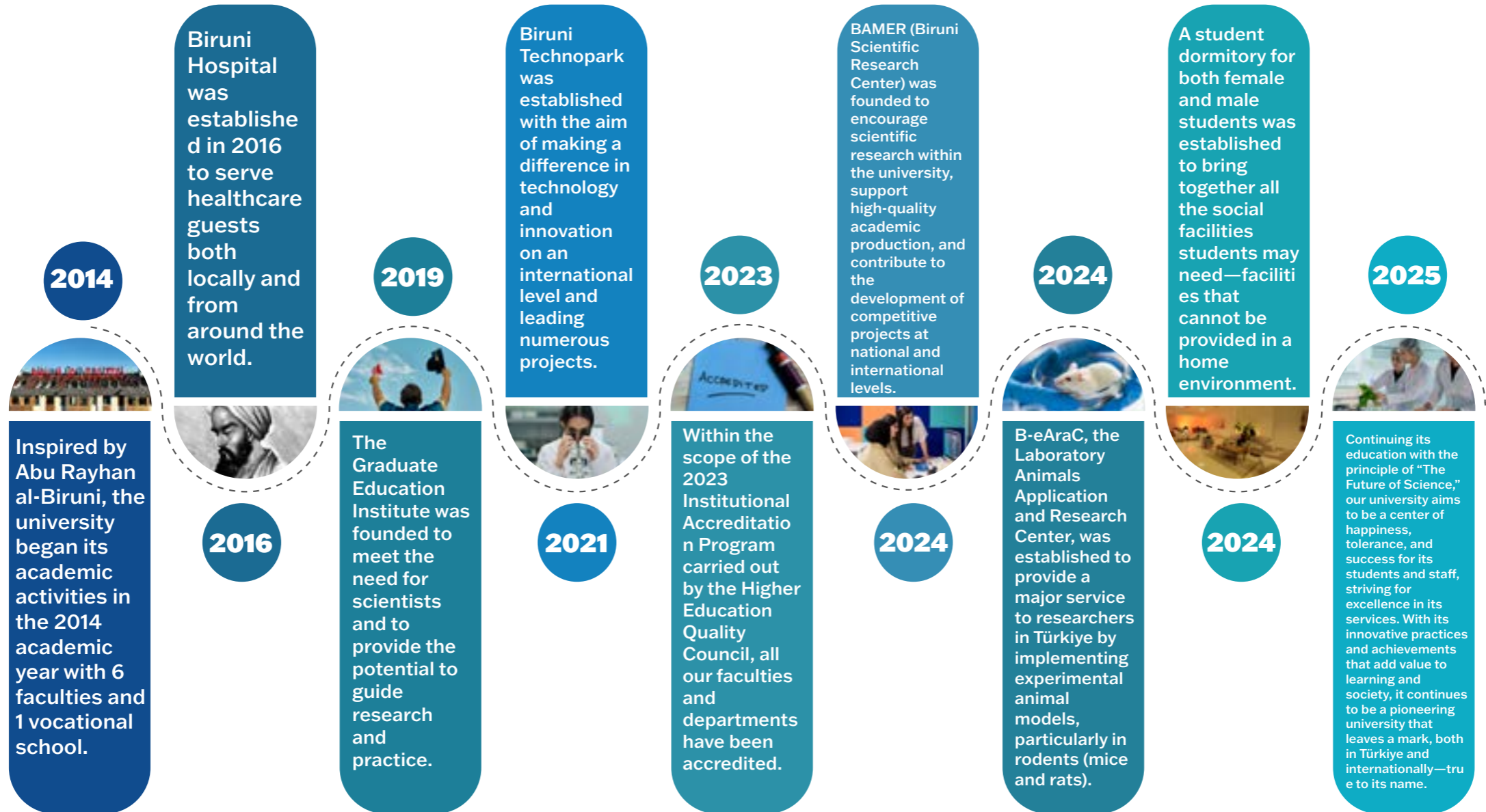
Institutional Framework: Strengthening Governance, Accountability, and Social Responsibility

Biruni University's governance model aligns with the principles of integrity, human rights, and public accountability.

- **Transparent Governance:** Institutional processes - from recruitment to budgeting - follow clear, documented, and publicly accessible procedures.
- **Academic Freedom and Responsibility:** We uphold the right to inquiry, debate, and expression within an environment that values respect and intellectual honesty.
- **Equal Opportunity Policies:** Our employment and admissions systems are guided by meritocracy, inclusivity, and non-discrimination.
- **Ethical Oversight and Compliance:** Ethics committees ensure adherence to research integrity, patient rights, and data protection standards.
- **Rule of Law and Social Justice Initiatives:** Through public lectures, advocacy, and partnerships, we engage with policy-makers and civic organizations to promote democratic values and human dignity.
- **Conflict Resolution and Well-Being:** Dedicated support systems provide psychological and legal assistance, ensuring a culture of fairness, safety, and empathy within the university community.

At Biruni University, peace and justice are not only topics we teach - they are the standards by which we measure our own actions. We believe that strong institutions are built not on authority, but on trust; not on control, but on conscience.

O U R S T O R Y



O u r V i s i o n

To be a pioneering university that, true to its name, leaves a lasting mark — leading change through knowledge, innovation, and impact.

O u r M i s s i o n

To be an innovative and leading university that cultivates qualified individuals through transformative education, produces original knowledge at both national and international levels, and contributes to solving societal challenges with scientific and ethical responsibility.

C O R E V A L U E S



K n o w l e d g e

Commitment to learning, discovery, and the pursuit of truth as the foundation of progress.



W i s d o m

Using knowledge with depth, reflection, and ethical judgment to serve humanity.



H u m a n i t y

Placing human dignity, empathy, and compassion at the heart of education, research, and service.



A c a d e m i c F r e e d o m

Protecting the right to think, question, and create freely within an environment of respect and integrity.



P i o n e e r i n g S p i r i t

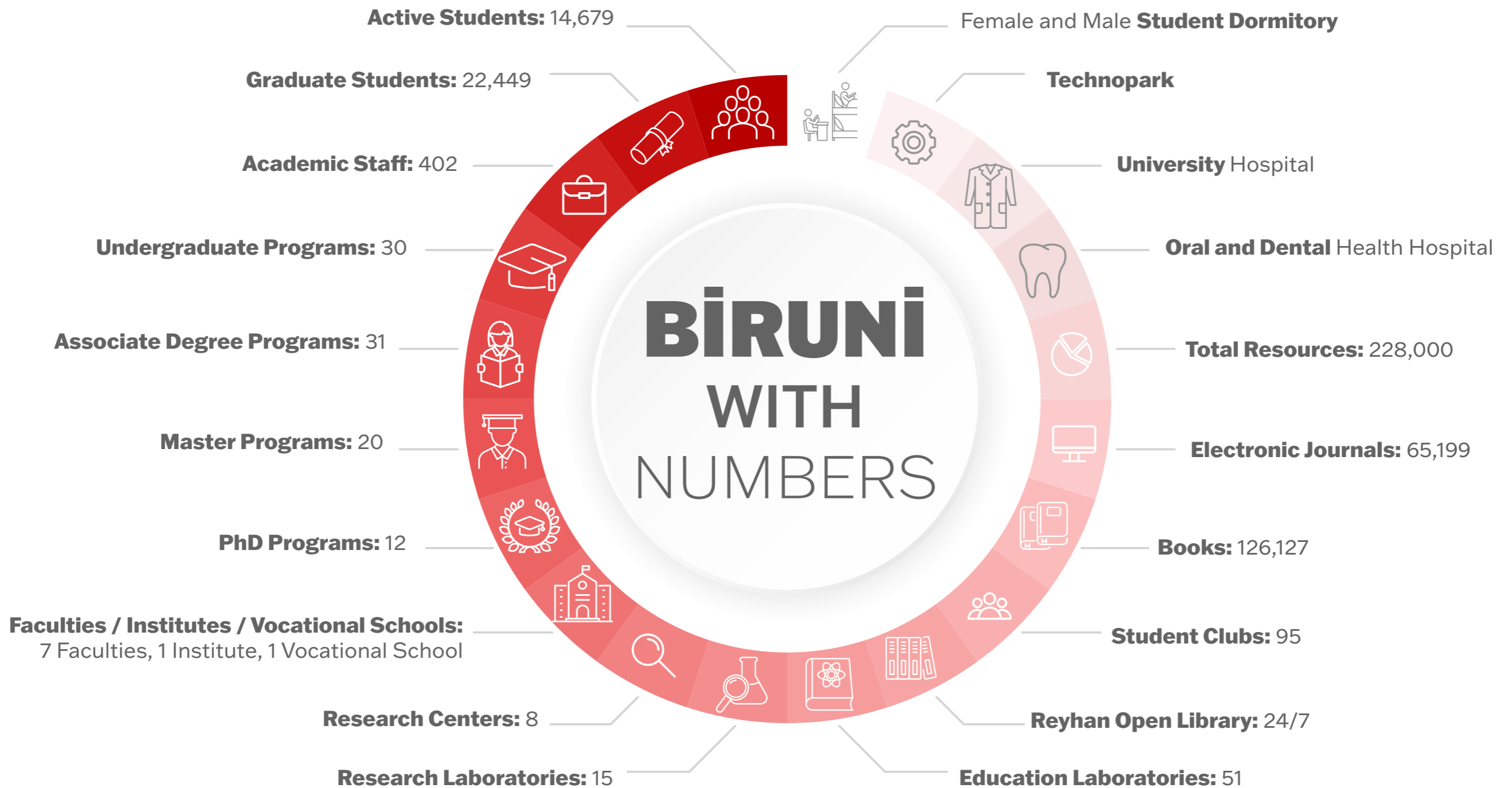
Challenging conventions with creativity and vision; leading transformative change in education and science.



C o u r a g e

Acting with integrity and resilience in the face of uncertainty — daring to stand for what is right and meaningful.

BİRÜNİ WITH NUMBERS



Academic Freedom Policy

Biruni University embraces academic freedom and freedom of expression as fundamental principles. Our Academic Freedom Policy aims to ensure that faculty members, researchers, and students operate freely in the processes of knowledge production, learning, teaching, and research. Our university fosters an academic culture based on freedom of thought and expression, while opposing all forms of pressure, censorship, and interference in academic work. This policy aims to ensure a free academic environment for scientific development and social contribution.

Core Values

Biruni University's Academic Freedom Policy is based on the following core values:

1. **Freedom of Thought and Expression:** Faculty members, researchers and students can freely express their thoughts in the processes of knowledge production and sharing and act freely in academic studies.
2. **Scientific Independence:** Academic research is conducted independently of any external pressure, censorship, or direction on

knowledge and scientific findings. Scientific studies are evaluated using objective criteria .

3. **Critical Thinking:** Our university encourages critical thinking. Respect for diverse



4. **Academic Responsibility:** In addition to academic freedom, faculty members,

researchers and students are obligated to act in accordance with ethical principles and academic responsibilities in their scientific work.

5. **Pluralism and Diversity:** Diverse scientific approaches, methodologies, and perspectives are respected within the university community. Our university fosters an environment that encourages diversity and allows diverse academic perspectives to flourish.

Academic Freedom Policy Strategies
 Biruni University implements the following strategies to secure and promote academic freedom:

1. **Free and Independent Research Environment:** Our university provides all the necessary conditions for the independent and free conduct of academic research and scientific activities. Academic studies are kept free from any political, ideological, or economic pressure.
2. **Platforms for Freedom of Thought and Expression:** Our university creates seminars, conferences, workshops, and discussion

platforms where faculty, researchers, and students can freely share their ideas. An environment where diverse views can be freely expressed is encouraged.

3. Freedom of Academic Publication and Research: The content of scientific articles, books, and other academic publications is developed in accordance with academic freedom. Scholarly work is shared without censorship or interference during the publication process.

4. Critical Thought and Discussion: Our university supports critical thinking and encourages faculty and students to develop critical perspectives on scientific and societal issues. Academic freedom ensures free discussion.

5. Principles of Academic Ethics and Responsibility: Academic freedom is balanced with responsibility. Faculty members, researchers, and students are obligated to adhere to ethical principles and principles of scientific integrity in their academic work.

6. Protection Against Academic Pressure: Our university protects faculty, researchers, and students from any pressure or censorship directed at their academic work. Violations of academic freedom are dealt with swiftly.

7. Promoting Pluralism and Diversity of Thought: Our university supports the coexistence of diverse scientific perspectives and methodological approaches. We create an

academic environment where different academic perspectives are compared, discussed, and developed.

Goals

Biruni University's Academic Freedom Policy are:



1. Advancing Academic Freedom: Expanding the scope of academic freedom and ensuring that policies that support this freedom are more

widely disseminated throughout the university.

2. Strengthening Critical Thinking: Increasing participation in seminars, workshops and conferences that foster critical thinking among university faculty, researchers and students by 40%.

3. Encouraging Diversity of Thought: To increase intellectual diversity at the university by 30% by providing a free discussion environment where different scientific and academic views coexist.

4. Safeguards Against Academic Pressure: Strengthening effective protection mechanisms against academic pressure and censorship throughout our university and reducing such violations to zero.

5. Disseminating Ethical Responsibility: Increasing ethical awareness among faculty members and students by 50% by creating awareness of compliance and responsibility with academic ethical principles.

Biruni University is committed to supporting the policy of academic freedom, creating a free, independent, and responsible academic environment for faculty, researchers, and students, and contributing to scientific development. Our university ensures the continuous development and implementation of this policy.

Human Rights, Rule Of Law And Justice Policy

Biruni University is committed to providing an educational and working environment that embraces respect for human rights, the rule of law, and justice as fundamental values. Our Human Rights, Rule of Law, and Justice Policy aims to ensure the protection of the rights of all individuals, their fair treatment, and the safeguarding of a structure based on the rule of law. Our university operates with a zero-tolerance policy towards human rights violations and takes a strong stance against all forms of injustice. This policy is designed to protect the rights of every individual within the university community and to foster a campus culture based on the principle of equality.

Core Values

Biruni University's Human Rights, Rule of Law and Justice Policy is based on the following core values:

1. **Respect for Human Rights:** Our university respects universal human rights and ensures the protection of the rights of every individual. Every individual has equal rights, regardless of gender, race, religion,

language, ethnicity, disability, or other identity characteristics.

2. **Rule of Law:** The rule of law is fundamental to all our activities. Our university embraces a



fair and transparent management approach, creating an environment where everyone's rights are legally protected.

3. **Justice:** Every individual within the

university community is evaluated fairly. Equal opportunities are provided to all individuals in accordance with the principles of equality and impartiality.

4. **Zero Tolerance:** A zero-tolerance policy is implemented against all forms of human rights violations, injustice, and discrimination. Effective interventions are implemented to ensure justice is achieved in the face of such behavior.

5. **Accountability and Transparency:** Our university adheres to the principles of transparency and accountability in its management processes. All decisions and practices are carried out openly, within the framework of human rights and justice principles.

Human Rights, Rule of Law and Justice Policy Strategies

implements the following strategies to secure the principles of human rights, the rule of law and justice :

1. **Human Rights Training:** Our university regularly organizes training and awareness-

raising seminars for students and staff on human rights, the rule of law, and justice. These trainings aim to raise awareness about the protection of human rights and the pursuit of justice.

2. **Legal Protection and Support Mechanisms:** Secure and confidential recourse mechanisms are established for individuals subjected to human rights violations or unjust practices. These mechanisms provide victims with the legal support necessary to protect their rights and ensure justice.

3. **Policies Ensuring the Rule of Law:** Our university develops policies and procedures that uphold the rule of law in all its activities . Fair hearings and impartial decision-making processes are implemented across campus.

4. **Intervention Against Injustice:** Our university takes swift and effective action against all forms of injustice, unfairness, or human rights violations. The rights of individuals facing such situations are protected, and appropriate sanctions are imposed on those responsible.

5. **Fair Opportunities and Equality:** Equal opportunities are ensured for all individuals throughout the university. When practices that violate the principle of equality or discrimination are detected, the necessary steps are taken to immediately correct these practices.

6. **Accountability and Reporting:** The university administration adheres to the

principle of accountability for human rights and justice. All practices and decisions are reported transparently and shared with the university community.

7. **Social Participation and Responsibility Projects:** Our university develops projects and collaborates with civil society organizations to raise public awareness of human rights and justice. These projects aim to promote social responsibility and raise awareness of justice.

Goals

Biruni University's Human Rights, Rule of Law



and Justice Policy are:

1. **Raising Human Rights Awareness:** Increasing participation in training and seminars organised to raise awareness on human rights, rule of law and justice across the university by 50%.

2. **Providing Fair and Equal Opportunities:** To create fair opportunities for all individuals at the university and to develop effective policies to reduce all forms of discrimination to 100% zero.

3. **Legal Support and Complaint Mechanisms:** Increasing the legal support provided to victims by making application and complaint mechanisms against human rights violations more accessible.

4. **Promoting the Rule of Law:** To ensure the full implementation of the rule of law throughout the campus and to strengthen internal regulations accordingly.

5. **Expanding Public Awareness Projects:** Increasing the number of projects that promote public participation in human rights, rule of law and justice issues by 40%.

Biruni University, with its policy of human rights, the rule of law, and justice, aims to create an educational and working environment where the rights of every individual are protected, justice is ensured, and the rule of law prevails. Our university is committed to the continuous improvement and effective implementation of this policy.

Governance Policy With Internal And External Stakeholders

Biruni University embraces a transparent, participatory, and collaborative governance approach with its internal and external stakeholders. Our Governance Policy with Internal and External Stakeholders supports the achievement of the university's strategic objectives while ensuring the active participation of all stakeholders in decision-making processes. This policy aims to establish healthy and sustainable relationships with our university's students, academic and administrative staff, alumni, the business community, public institutions, civil society organizations, and other external stakeholders. Our university is committed to creating a structure that responds to the needs of society and generates added value by fostering a strong environment of collaboration and dialogue with its stakeholders.



Core Values

Biruni University's Governance Policy with Internal and External Stakeholders is based on the following core values:

1. Transparency: Our university prioritizes

transparency in all decision-making processes. Open communication and information sharing are ensured in collaborations with internal and external stakeholders.

2. Participation: Active stakeholder participation in decision-making processes is encouraged. The opinions and suggestions of each stakeholder are taken into account,

and processes are conducted in a democratic manner.

3. Collaboration: The university aims to develop joint projects and contribute to society by

establishing strong collaborations with its internal and external stakeholders.

4. Sustainability: Relationships with stakeholders are structured in line with long-term and sustainability principles. This creates lasting and strong partnerships.

5. Responsibility: Our university is sensitive to the needs of its stakeholders and adopts an accountable approach. Responsibility and ethical principles are adhered to in our governance processes.

Governance Policy Strategies with Internal and External Stakeholders

Biruni University implements the following strategies to establish a strong governance structure with

stakeholders:

1. Stakeholder Relationship Management: Our university establishes a stakeholder management system to effectively

communicate and foster collaborations with internal and external stakeholders. This system is structured to understand the expectations of all stakeholders and develop solutions that meet these expectations.

2. **Participation and Feedback Mechanisms:** Regular meetings, workshops, and feedback mechanisms are established to ensure stakeholder participation in decision-making processes. Internal stakeholders (students, academic and administrative staff) and external stakeholders (alumni, the business world, public institutions) are regularly included in the processes.

3. **Joint Projects and Collaborations:** Joint research, education, and social projects are developed with external stakeholders. Collaborations with public institutions, the private sector, and civil society organizations are conducted in a way that enhances the university's contribution to society.

4. **Stakeholder Communication Channels:** The University establishes various communication channels to ensure continuous and effective communication with stakeholders. Digital platforms, social media, stakeholder newsletters, and regular meetings are used to ensure a transparent flow of information.

5. **Social Responsibility and Impact Assessment:** The University regularly assesses the social, environmental, and economic

impacts of projects undertaken with all stakeholders. Collaborations are continuously improved based on these assessments.

6. **Collaboration and Innovation with External Stakeholders:** Our university encourages research and development (R&D) collaborations with external stakeholders to develop innovative projects and generate sustainable solutions. In these processes, innovative projects are implemented in line with new technologies and sustainable development goals.

7. **Alumni Relations and Feedback:** Relationships with alumni are continually



strengthened, and alumni feedback plays a crucial role in the university's development processes. Alumni play a significant role among the university's external stakeholders, and collaborations are fostered on community development projects.

Goals

Biruni University's Governance Policy with Internal and External Stakeholders are:

1. **Increasing Stakeholder Participation:** Our university aims to increase the active participation of internal and external stakeholders in governance processes by 40%. The number of meetings and events that foster collaboration with stakeholders will be increased.

2. **Strengthening Joint Projects and Collaborations:** To develop innovative and sustainable projects that benefit society by increasing the number of joint projects with public institutions, the private sector and non-governmental organizations.

3. **Strengthening Alumni Relations:** Increasing communication with alumni and more effectively integrating alumni feedback into the university's decision-making processes. Increasing alumni participation in the university's community development projects by 30%.

4. **Developing Transparent Communication Channels:** Adopting the principle of

transparency in communication with stakeholders and expanding the use of digital platforms and other communication channels.

5. Expanding Social Responsibility Projects: Increasing the number of social responsibility projects carried out with stakeholders for social development and regularly monitoring and improving the impact of these projects.

Biruni University is committed to strengthening the university-society bond by establishing strong and sustainable relationships with internal and external stakeholders, and to developing a participatory governance model that is responsive to stakeholder needs. Our university ensures the effective implementation and continuous improvement of this policy.



Medicine and Law Converge

The seminar, organized in collaboration between Biruni University and Yeditepe University Faculty of Law, served as an important platform for knowledge exchange at the intersection of healthcare and law. The event brought together expert academics and healthcare professionals to comprehensively address legal responsibilities in medical practice, patient rights, and the legal risks encountered in professional healthcare applications.

Through this initiative, the seminar contributed to increasing legal awareness among healthcare professionals, reducing professional risks, and supporting the protection of patient safety and rights. It also represented a significant step toward strengthening interdisciplinary collaboration and advancing the development of sustainable healthcare services.



SDG RELATED COURSES

Health Law and Legislation



The Health Law and Legislation course stands at the core of Biruni University's approaches to sustainable development and ethical governance in higher education and is strongly aligned with Sustainable Development Goal 16: Peace, Justice, and Strong Institutions. The primary aim of the course is to enable students to gain an in-depth understanding of the legal foundations of fair, transparent, and accountable decision-making processes in healthcare services, including patient rights, medical liability, ethical standards in healthcare, and the fundamental principles of legislative compliance. It further seeks to equip students with the ability to scientifically analyze individual and societal health issues through the lenses of legal gaps, inequalities in access to justice, and unethical practices in healthcare, while also encouraging them to develop innovative solutions in innovation and entrepreneurship that promote more just and sustainable health systems through inclusive educational principles.

Delivered through an experiential and practice-based learning approach, the course allows students to apply their skills in real-world contexts through case analyses, legislative interpretation, and ethical decision-making simulations. In addition, social impact-oriented projects foster awareness of justice and legal compliance in healthcare. Through participation in research and development projects, students demonstrate tangible social responsibility, while this interdisciplinary learning process strengthens their professional ethics and critical thinking skills. Consequently, the course contributes both to students' individual development and to the advancement of global goals related to justice and strong institutions.

In this way, Biruni University reinforces its identity as an innovative higher education institution that serves the realization of sustainable development goals by cultivating a qualified workforce committed to promoting peace, justice, and strong institutions—particularly through the dissemination of the rule of law and ethical governance within the healthcare sector.

Individuals with Special Needs in Health Legislation

The Individuals with Special Needs in Health Legislation course is positioned at the core of Biruni University's approaches to sustainable development and legal justice in higher education and is strongly aligned with Sustainable Development Goal 16: Peace, Justice, and Strong Institutions. The primary aim of the course is to enable students to gain an in-depth understanding of equal access to healthcare services for individuals with special needs, their legal rights, the legislative framework governing inclusive education and rehabilitation services, and the legal foundations of preventing discrimination and ensuring fair decision-making processes. The course also seeks to equip students with the ability to scientifically analyze individual and societal health issues in terms of insufficient legal protection, barriers to access to justice, and inequalities in healthcare services, while encouraging them to develop innovative and entrepreneurial solutions that contribute to more just and sustainable health systems.

Delivered through an experiential, practice-based learning approach, the course allows students to apply their skills in real-world contexts through legislative analysis, case studies, and simulations of legal rights advocacy. In addition, social impact-oriented projects foster awareness of safeguarding the rights of individuals with special needs and promoting justice in healthcare. Through participation in research and development projects, students demonstrate tangible social responsibility, while this interdisciplinary learning process strengthens their professional ethics and critical thinking skills, contributing both to their individual development and to the achievement of global goals related to justice and strong institutions.

In this way, Biruni University reinforces its identity as an innovative higher education institution that serves the realization of sustainable development goals by educating a qualified workforce committed to promoting peace, justice, and strong institutions—particularly through ensuring fair access to healthcare for individuals with special needs via legal frameworks and inclusive education.



Health and Professional Ethics



The Health and Professional Ethics course lies at the core of Biruni University's approaches to sustainable development and ethical governance in higher education and is strongly aligned with Sustainable Development Goal 16: Peace, Justice, and Strong Institutions. The primary aim of the course is to enable students to gain an in-depth understanding of the fundamental principles of ethical decision-making in healthcare, professional responsibility, transparency, accountability, and patient-centered care. It also seeks to equip students with the ability to scientifically analyze individual and societal health issues in terms of ethical violations, erosion of trust, inequalities in access to justice, and corruption in healthcare services, while encouraging them to develop innovative and entrepreneurial solutions that promote more just and sustainable health systems through inclusive educational principles.

Delivered through an experiential, practice-based learning approach, the course

allows students to apply their skills in real-world contexts through the analysis of ethical dilemmas, case studies, and ethics committee simulations. In addition, social impact-oriented projects foster awareness of ethics and social responsibility in healthcare. Through participation in research and development projects, students make tangible contributions, while this interdisciplinary learning process strengthens their professional ethics and critical thinking skills, contributing both to their individual development and to the achievement of global goals related to justice and strong institutions.

In this way, Biruni University reinforces its identity as an innovative higher education institution that supports the realization of sustainable development goals by educating a qualified workforce committed to promoting peace, justice, and strong institutions—particularly through the dissemination of the rule of law and ethical governance within the healthcare sector.

Forensic Emergencies

The Forensic Emergencies course is positioned at the core of Biruni University's approaches to sustainable development and transparency in legal processes within higher education and is strongly aligned with Sustainable Development Goal 16: Peace, Justice, and Strong Institutions. The primary aim of the course is to enable students to gain an in-depth understanding of the fundamental principles of compliance with legal procedures in the delivery of emergency healthcare services, evidence preservation, forensic case management, ethical responsibility, and coordination between healthcare and legal systems. The course also seeks to equip students with the ability to scientifically analyze individual and societal issues in terms of errors in forensic processes, barriers to access to justice, and the lack of professional accountability, while encouraging them to develop innovative and entrepreneurial solutions that contribute to more just and sustainable healthcare and justice institutions through inclusive educational principles.

Delivered through an experiential, practice-based learning approach, the course allows students to apply their skills in real-world contexts through forensic case simulations, legal reporting techniques, and the analysis of ethical dilemmas. In addition, social impact-oriented projects foster awareness of protecting victims' rights and ensuring legal compliance in forensic cases. Through participation in research and development projects, students demonstrate tangible social responsibility, while this interdisciplinary learning process strengthens their professional ethics and critical thinking skills, contributing both to their individual development and to the achievement of global goals related to justice and strong institutions.

In this way, Biruni University reinforces its identity as an innovative higher education institution that supports the realization of sustainable development goals by educating a qualified workforce committed to promoting peace, justice, and strong institutions—particularly through enhancing transparency and accountability in forensic processes.



Education Law



The Education Law course is positioned at the core of Biruni University's approaches to sustainable development and fair governance in higher education and is strongly aligned with Sustainable Development Goal 16: Peace, Justice, and Strong Institutions. The primary aim of the course is to enable students to gain an in-depth understanding of the fundamental principles of the rule of law, transparency, accountability, student and teacher rights, inclusive education legislation, and ethical standards in educational governance. It also seeks to equip students with the ability to scientifically analyze individual and societal challenges in education in terms of inequalities in access to education, legal gaps, and unethical practices within educational institutions, while encouraging them to develop innovative and entrepreneurial solutions that promote more just and sustainable education systems.

Delivered through an experiential, practice-based learning approach, the course allows students to apply their skills in real-world contexts through legislative analysis, legal case reviews, ethical decision-making simulations, and rights advocacy practices. In addition, social impact-oriented projects foster awareness of justice and legal compliance in education. Through participation in research and development projects, students demonstrate tangible social responsibility, while this interdisciplinary learning process strengthens their professional ethics and critical thinking skills, contributing both to their individual development and to the achievement of global goals related to justice and strong institutions.

In this way, Biruni University reinforces its identity as an innovative higher education institution that supports the realization of sustainable development goals by educating a qualified workforce committed to promoting peace, justice, and strong institutions-particularly through the dissemination of the rule of law and ethical governance within the education sector.

Critical Thinking Education

The Critical Thinking Education course is positioned at the core of Biruni University's approaches to sustainable development and the construction of strong democratic institutions in higher education and is strongly aligned with Sustainable Development Goal 16: Peace, Justice, and Strong Institutions. The primary aim of the course is to enable students to develop skills in questioning information sources, logical argumentation, recognizing biases, and rational decision-making, thereby gaining an in-depth understanding of the fundamental principles of contributing to transparent and accountable governance. The course also seeks to equip students with the ability to scientifically analyze individual and societal issues in terms of misinformation, populism, and the lack of effective decision-making mechanisms, while encouraging them to develop innovative and entrepreneurial solutions that support participatory, fair, and sustainable policies through inclusive educational principles.

Delivered through an experiential, practice-based learning approach, the course allows students to apply their skills in real-world contexts through the analysis of logical fallacies, debates, and ethical decision-making simulations. In addition, social impact-oriented projects foster awareness of rationality and social responsibility in public discourse. Through participation in research and development projects, students make tangible contributions, while this interdisciplinary learning process strengthens their professional ethics and critical thinking skills, contributing both to their individual development and to the achievement of global goals related to justice and strong institutions.

In this way, Biruni University reinforces its identity as an innovative higher education institution that supports the realization of sustainable development goals by educating a qualified workforce committed to promoting peace, justice, and strong institutions—particularly through the dissemination of rational thinking skills and inclusive education practices.



Health Laws for Children with Special Needs



The Health Laws for Children with Special Needs course is positioned at the core of Biruni University's approaches to sustainable development and legal equality in higher education and is strongly aligned with Sustainable Development Goal 16: Peace, Justice, and Strong Institutions. The primary aim of the course is to enable students to gain an in-depth understanding of access to healthcare services for children with special needs, their rights and legal protections, the prevention of discrimination, and the legal foundations of fair health policies. It also seeks to equip students with the ability to scientifically analyze individual and societal health issues in terms of insufficient legal advocacy, barriers to access to justice, and inequalities in healthcare services, while encouraging them to develop innovative and entrepreneurial solutions that promote more just and sustainable health systems through inclusive educational principles.

Delivered through an experiential, practice-based learning approach, the course allows students to apply their skills in real-world contexts through

legislative analysis, case studies, and simulations of legal rights advocacy. In addition, social impact-oriented projects foster awareness of ensuring justice in healthcare and safeguarding the rights of children with special needs. Through participation in research and development projects, students demonstrate tangible social responsibility, while this interdisciplinary learning process strengthens their professional ethics and critical thinking skills, contributing both to their individual development and to the achievement of global goals related to justice and strong institutions.

In this way, Biruni University reinforces its identity as an innovative higher education institution that serves the realization of sustainable development goals by educating a qualified workforce committed to promoting peace, justice, and strong institutions-particularly through ensuring fair access to healthcare for disadvantaged groups via legal frameworks and inclusive education.

Health Rights and Intertional Law



The Health Rights and International Law course is positioned at the core of Biruni University’s approaches to sustainable development and global justice in higher education and is strongly aligned with Sustainable Development Goal 16: Peace, Justice, and Strong Institutions. The primary aim of the course is to enable students to gain an in-depth understanding of the protection of the right to health within the framework of international human rights law, the fight against health inequalities, and the international mechanisms that ensure transparency and accountability in health systems. The course also seeks to equip students with the ability to scientifically analyze individual and global challenges in terms of inadequate legal protection, barriers to access to justice, and inequalities in healthcare services, while encouraging them to develop innovative and entrepreneurial solutions that promote more just and sustainable health systems through inclusive educational principles.

Delivered through an experiential, practice-based learning approach, the course

allows students to apply their skills in real-world contexts through international case analyses, policy development exercises, and human rights advocacy simulations. In addition, social impact-oriented projects foster awareness of justice in global health and the rule of law. Through participation in research and development projects, students demonstrate tangible social responsibility, while this interdisciplinary learning process strengthens their professional ethics and critical thinking skills, contributing both to their individual development and to the achievement of global goals related to justice and strong institutions.

In this way, Biruni University reinforces its identity as an innovative higher education institution that serves the realization of sustainable development goals by educating a qualified workforce committed to promoting peace, justice, and strong institutions—particularly through strengthening human rights and justice in healthcare via international law and inclusive education.

Human Rights and Democracy Education

The Human Rights and Democracy Education course is positioned at the core of Biruni University's approaches to sustainable development and the promotion of strong democratic institutions in higher education and is strongly aligned with Sustainable Development Goal 16: Peace, Justice, and Strong Institutions. The primary aim of the course is to enable students to gain an in-depth understanding of the scientific foundations of fundamental human rights, the rule of law, transparent governance, participatory citizenship, access to justice mechanisms, and inclusive education principles. The course also seeks to equip students with the ability to scientifically analyze individual and societal challenges in terms of human rights violations, discrimination, and the lack of democratic participation, while encouraging them to develop innovative and entrepreneurial solutions that support peaceful, just, and sustainable societies.

Delivered through an experiential, practice-based learning approach, the course allows students to apply their skills in real-world

contexts through the design of rights advocacy projects, democratic process simulations, and community dialogue initiatives. In addition, social impact-oriented projects foster awareness of promoting fair access to justice and equality for all individuals. Through participation in research and development projects, students demonstrate tangible social responsibility, while this interdisciplinary learning process strengthens their professional ethics and critical thinking skills, contributing both to their individual development and to the achievement of global goals related to justice and strong institutions.

In this way, Biruni University reinforces its identity as an innovative higher education institution that serves the realization of sustainable development goals by educating a qualified workforce committed to promoting peace, justice, and strong institutions—particularly through the dissemination of active citizenship and the rule of law through education.



COMMUNITY LIFE LONG LEARNING



Biruni University provides structured outreach, education, and capacity-building programmes aimed at strengthening the knowledge and decision-making capacity of policy-makers, public administrators, and legal and municipal leaders in Türkiye.

These initiatives are grounded in the university's mission to serve as a policy-relevant research and training hub, translating academic expertise into evidence-based action across domains such as public health, technology, migration and displacement, climate resilience, and inclusive education.

Policy and Governance Training Programmes

Biruni University regularly organises executive training series and policy dialogues for national and local government institutions, focusing on practical policy integration of scientific research and sustainable development goals.

Key examples include:

- Public Health & Policy Leadership Series

Capacity-building workshops for health directors, district governors, and municipal administrators on data-driven public health strategies, vaccine policy implementation, and community well-being frameworks.

Led by the Faculty of Medicine these sessions translate epidemiological research into governance solutions, aligning with SDG 3 (Good Health and Well-being) and SDG 16 (Strong Institutions).

- Higher Education & Digital Governance Workshops

Biruni's education and technology experts provide seminars on AI ethics, educational digitalisation, and governance transparency for senior university administrators and policymakers.

- Legal and Ethical Dimensions of Biotechnology Seminars:

Delivered by the Faculty of Pharmacy and Biomedical Engineering, these sessions support law-makers and ethics committee members in understanding legal frameworks around genetic research, bioethics, and patient data protection.



Migration, Refugee Inclusion, and Social Policy Outreach



Through partnerships with the Zeytinburnu Municipality, Biruni University plays a central role in upskilling local and regional policy actors on migration, integration, and social cohesion.

Key activities include:

- Annual Migration and Inclusion Forum:
A high-level policy platform co-hosted by the Faculty of Education and Faculty of Health Sciences, where policymakers, NGOs, and local leaders develop inclusive service models for migrant and refugee populations.
- Community Health & Displacement Policy Workshops:
These practical sessions train municipal officers and social workers on health communication, trauma-informed care, and intercultural mediation for displaced communities.
- Intercultural Competence in Policy and Education Training:
This module builds awareness among educators and local administrators regarding bias reduction and inclusive communication.

Climate Change, Urban Sustainability, and Technology Governance

Biruni University's sustainability framework integrates climate literacy into policymaker training through science-policy partnerships:

- Urban Resilience & Climate Adaptation Academy (with Zeytinburnu Municipality):

Faculty experts from engineering, environmental sciences, and public health collaborate to train urban planners and city officials on climate-sensitive design, disaster resilience, and green transition.

Participants co-develop local adaptation plans aligned with SDG 11 (Sustainable Cities and Communities) and SDG 13 (Climate Action).

- Technology and Ethics for Sustainable Futures Workshops:

Offered by Biruni's Engineering Faculty and the Innovation and Technopark Office, these seminars equip government and industry leaders with insights into AI regulation, green innovation, and ethical data use.

- Health & Climate Nexus Dialogues:

A policy-oriented roundtable series linking environmental change to public health challenges—supported by the Biruni University Hospital and environmental NGOs—to inform legislative priorities on climate-health intersections.



Public Education and Knowledge Transfer Platforms



Biruni complements formal training programmes with continuous public education and outreach initiatives that strengthen civic and institutional literacy among policymakers and citizens alike:

- **Biruni Open Lecture Series:**
A public seminar platform featuring researchers, municipal leaders, and policymakers discussing current global issues such as climate diplomacy, migration ethics, data governance, and social inclusion.
All sessions are livestreamed and archived for open access.
- **Biruni Academy for Lifelong Learning:**
Provides certified micro-learning modules on leadership, digital transformation, and ethical policy design for public servants and NGO managers.

Impact and Integration

Biruni's outreach programmes are embedded into its Strategic Governance Model, ensuring that knowledge transfer to policy actors is measured, evaluated, and aligned with both national and global frameworks.

The Community Impact & Partnership Committee (CIPC) monitors these initiatives, while the Sustainability & Data Office (SDO) tracks their outcomes against institutional Key Performance Indicators (KPIs) and SDGs.

Through these structured outreach and capacity-building programmes, Biruni University has become a recognized knowledge partner and policy resource for local and national authorities.

By bridging science, governance, and civic participation, the university advances the principles of evidence-based policymaking, institutional learning, and sustainable development, positioning itself as a regional leader in higher education-policy collaboration.



Representation On The University's Highest Governing Body



Biruni University ensures democratic and participatory governance through elected representation on its highest governing bodies - the University Senate and the University Executive Board. Both of these bodies include elected representatives of academic and administrative staff from all faculties, ensuring that decisions are made inclusively and reflect the diversity of the university community.

Faculty representatives are elected every three years through a transparent and fair internal voting process supervised by the Rectorate, guaranteeing balanced participation across academic units. In addition to staff representation, student participation is formally institutionalized through the Student Council. The President of the Student Council serves as the official student representative, attending Senate meetings to contribute to discussions related to student life, inclusion, welfare, and campus development.

This governance framework ensures that key decisions regarding institutional strategy, ethics, research priorities, and campus policy are informed by a broad spectrum of perspectives. The model promotes collaboration between management, faculty, staff, and students, reinforcing the university's commitment to transparency, integrity, and shared responsibility.

To further support accountability and openness, the minutes of Senate and Executive Board meetings, as well as major policy decisions and strategic outcomes, are publicly accessible on the university's official website. This practice exemplifies the university's dedication to good governance, transparency, and participatory decision-making, aligning directly with the principles of UN Sustainable Development Goal 16 (Peace, Justice, and Strong Institutions).

Biruni Student Council

Biruni University formally recognises the Biruni Student Council as an independent, democratically governed student body, established and regulated in accordance with the Higher Education Council (YÖK) framework in Türkiye.

The Student Council functions as the official representative structure of the student community, ensuring that student participation, feedback, and advocacy are systematically integrated into the university's governance processes.

Operating through an autonomous internal structure, the Council is composed of departmental, faculty, and university-level delegates who are elected annually through a secure, transparent digital voting system accessible to all students. This guarantees broad participation, inclusivity, and legitimacy in representation.

The Executive Board of the Council works in direct communication with the Rectorate and senior management to convey student perspectives on a wide range of issues, including academic quality, equality, inclusion, sustainability,

and well-being. Representatives are regularly invited to participate in institutional committees, strategic planning workshops, and university senate meetings, where they provide input on key policy areas such as:

- Student support and welfare
- Educational enhancement and curriculum development
- Diversity and equal opportunity policies
- Sustainable campus initiatives
- Community engagement and volunteering programmes

Beyond advocacy, the Student Council actively designs and implements student-led projects across academic, cultural, and civic domains. These include:

- Peer mentoring and orientation programmes for first-year students
- Volunteer-based social responsibility projects and health awareness campaigns
- Academic clubs and research societies that foster interdisciplinary collaboration
- Cultural festivals, art exhibitions, and innovation competitions promoting

creativity and inclusion

All financial and operational processes related to the Council's activities are governed by independent budgeting procedures with oversight mechanisms that ensure accountability, transparency, and ethical use of resources.

The Council's leadership has the institutional mandate to propose initiatives directly to the Rectorate, a mechanism that allows for bottom-up innovation and policy development. In recent years, the Council has played an active role in shaping initiatives such as the Biruni Green Campus Strategy, the Equality, Diversity, and Inclusion Policy Framework, and the Student Mental Health Action Plan, reinforcing its role as a genuine partner in institutional decision-making.

Through this governance model, Biruni University demonstrates a clear commitment to student voice, democratic participation, and shared leadership—ensuring that students are not only beneficiaries of education, but active contributors to the university's mission, culture, and societal impact.



Creating Safe, Inclusive, and Evidence-Based Dialogue Platforms



Biruni University serves as a neutral, inclusive, and evidence-based dialogue platform where diverse political, civic, and institutional stakeholders can come together to engage in constructive discussions on complex social, economic, and environmental challenges.

The university's approach is rooted in the principles of academic freedom, impartial facilitation, and social responsibility, ensuring that all dialogues are conducted in a "safe, non-partisan, and respectful environment" guided by integrity and mutual understanding.

This commitment is embedded within the institution's governance culture and operationalised through a series of structured initiatives and forums coordinated by the Community Impact & Partnership Committee (CIPC) and the Sustainability & Data Office (SDO).

Institutional Role as a Neutral Convenor

Biruni University recognises the importance of universities as civic mediators that transcend political affiliations to promote rational, inclusive discourse.

To this end, the Rectorate mandates that all dialogue events hosted under the Biruni umbrella adhere to the principles of:

- Non-partisanship – equal representation of diverse political and institutional viewpoints,
- Respect and psychological safety – clear moderation protocols that prevent bias,
- Evidence-based exchange – grounding all discussions in data, research, and verified knowledge.

Academic units are encouraged to act as neutral knowledge brokers, facilitating dialogues that focus on solutions, collaboration, and social cohesion rather than ideological divisions.



Flagship Dialogue Platforms



- **Biruni Policy & Society Dialogues:**
A recurring series of roundtables convening local and national policymakers, civil servants, academics, NGOs, and private sector representatives to discuss themes such as migration and integration, sustainable healthcare systems, gender equality, and climate resilience. Each dialogue is moderated by university faculty with expertise in ethics, law, and communication-ensuring balanced participation and factual grounding. Outputs from these sessions are compiled into non-partisan policy briefs shared with participants and relevant public institutions.
- **Biruni-Zeytinburnu Urban Dialogue Series:**
An institutionalised platform co-hosted with the Zeytinburnu Municipality, which brings together officials from different political parties, civil society actors, and resident associations to collaboratively address urban challenges—such as public health, transportation, and environmental planning. The dialogue process is explicitly designed to foster consensus-building through evidence-based deliberation rather than political negotiation.
- **Peace, Justice & Dialogue Seminars:**
Organised under SDG 16 initiatives, these public seminars explore the role of dialogue in conflict prevention, justice, and democratic governance. Participants include journalists, academics, local administrators, and human rights organisations. The seminars provide a reflective, safe intellectual space where participants can express differing opinions grounded in mutual respect.

Academic and Ethical Safeguards

To ensure neutrality and safety, Biruni University maintains a set of ethical and procedural safeguards:

- All public dialogues are conducted under the Ethical Communication and Dialogue Code, approved by the University Senate.
- Event moderation is overseen by trained facilitators from the Psychology and Communication faculties who ensure psychological safety and equal speaking opportunities.
- Participants from opposing viewpoints are invited under clear rules of engagement promoting active listening and evidence-based reasoning.
- The university's Ethics Board reviews any potential risk of bias or exclusion prior to event approval.

These measures position Biruni as a trusted convener where dialogue can occur freely but responsibly—balancing openness with academic rigor.



Collaboration with Local and International Partners



Biruni University collaborates with national and global partners to host multi-stakeholder forums on politically sensitive topics within a structured academic setting:

- Joint Policy Workshops with UN agencies (e.g., UNDP Türkiye, WHO Country Office) focusing on equity, sustainable governance, and climate resilience.
- Roundtables with Municipal Networks from different political affiliations to share experiences in local governance and citizen participation.
- Intercultural and Interfaith Dialogue Events co-hosted with NGOs and community leaders to strengthen mutual understanding and social harmony in diverse communities.

These initiatives reflect the university's role as a safe intellectual commons where pluralism, inclusivity, and empathy form the foundation of dialogue.

Outcomes and Institutional Impact

- Over 50 high-level dialogues and policy forums hosted between 2021–2025 with participation from public agencies, local governments, and NGOs representing diverse political spectrums.
- Creation of cross-party municipal collaboration models on health, education, and environmental sustainability emerging from Urban Dialogue sessions.
- Positive participant feedback indicating 92% agreement that Biruni provides a “neutral, inclusive, and respectful space for open dialogue.”
- Integration of insights from dialogue outcomes into the Biruni Sustainability Action Report and the Annual Strategic Plan, reinforcing evidence-based governance.

Through these platforms, Biruni University embodies its founding ethos: to be a bridge between knowledge and society.

By fostering open, non-partisan dialogue among policymakers, civic actors, and the public, Biruni contributes directly to peaceful, just, and inclusive institutions—demonstrating how higher education can play a transformative role in democratic resilience and societal cohesion.

The university’s dialogue ecosystem thus provides not only a “safe space” but a “shared space”—where research, respect, and reason guide every conversation toward collective progress.



Governance Ecosystem and Framework Alignment



Biruni University has built a comprehensive, multi-layered governance ecosystem that institutionalises collaboration between the university and its surrounding community. This ecosystem ensures that local stakeholders including residents, local governments, professional chambers, non-governmental and civil society organisations, and humanitarian agencies have both a structured and legitimate voice in the university's decision-making, policy development, and social impact strategies.

Rather than approaching community engagement as a series of isolated outreach activities, Biruni University has transformed it into a systemic governance mechanism, embedded within its strategic planning architecture, quality assurance system, and institutional culture. This ecosystem operates through clearly defined frameworks, protocols, and committees that enable co-decision, joint evaluation, and transparent reporting at every level of university governance.

At the centre of this model stands the Biruni Local Partnership and Dialogue Framework (LPDF) a formal structure that operationalises the university's vision of being not only an academic institution but also a civic anchor and social innovation hub within its district.

Purpose and Design of the LPDF

The LPDF was conceived as an institutional bridge connecting academia with the social, economic, and cultural dynamics of the Zeytinburnu region and the wider Istanbul metropolitan area. It provides a structured mechanism through which the university:

- Identifies and prioritises local challenges collaboratively with community partners;
- Co-designs projects and interventions that align with mutual goals;
- Integrates external perspectives into curriculum design, research priorities, and sustainability policies; and
- Monitors outcomes through participatory evaluation methods that include both internal and external reviewers.

The Framework operates across three integrated dimensions:

1. **Strategic Dialogue and Consultation:** Regular roundtables, forums, and policy dialogues with municipal authorities, local NGOs, and residents to identify emerging issues in areas such as health, education, environment, and social inclusion.
2. **Collaborative Project Design and Implementation:** Co-created initiatives in which university departments, municipal units, and community representatives jointly develop and implement programmes with measurable outcomes.
3. **Accountability and Transparency:** Shared monitoring systems and annual impact reviews that ensure local stakeholders can evaluate the effectiveness and ethical integrity of the university's community engagement.



Alignment with National and International Standards



The LPDF is fully aligned with the Higher Education Council (YÖK) directives promoting toplumla etkileşim (university–society engagement) as a core pillar of institutional excellence in Türkiye. In line with these directives, Biruni University integrates stakeholder engagement indicators into its internal Quality Assurance and Strategic Management Framework, thereby ensuring that social responsibility is not peripheral but central to institutional performance.

On the international level, the LPDF is explicitly mapped against the United Nations Sustainable Development Goals, particularly:

- SDG 3 (Good Health and Well-Being): through collaborative health literacy and preventive care programmes for local residents;
- SDG 4 (Quality Education): through inclusive education access and lifelong learning partnerships with local schools and NGOs;

- SDG 10 (Reduced Inequalities): through refugee integration, gender equity, and disability inclusion projects;
- SDG 11 (Sustainable Cities and Communities): through joint initiatives on urban health, resilience, and environmental sustainability; and
- SDG 17 (Partnerships for the Goals): through institutionalised, multi-sector collaboration and transparent reporting practices.

Moreover, Biruni's governance structure is consistent with the European University Association (EUA) Guidelines on Inclusive Governance, which emphasise participatory leadership, shared accountability, and evidence-based policy development. The LPDF operationalises these principles by ensuring that community partners are represented in advisory boards, university committees, and thematic working groups on sustainability, equity, and innovation.

Strategic Impact

Through the LPDF, Biruni University redefines the relationship between a university and its environment - shifting from a one-way model of service provision to a reciprocal model of co-creation and shared value generation.

This approach transforms local collaboration into an ongoing dialogue that informs institutional decisions, enhances social trust, and accelerates the university's contribution to both national development priorities and global sustainability objectives.

In essence, the LPDF embeds participation, transparency, and impact measurement as pillars of governance - turning Biruni University into a living model of engaged higher education where academic excellence and community well-being evolve hand in hand.



Governance Structure and Policy Framework



Local stakeholder participation is a core pillar of Biruni University's Strategic Governance Model, reflecting the institution's conviction that higher education must operate not as an isolated system, but as an active civic actor embedded in the social, economic, and environmental fabric of its community.

To guarantee that community engagement is institutionalised, measurable, and impactful, Biruni has established a set of governance mechanisms and policy frameworks that translate participation into sustained, evidence-based decision-making.

The Community Impact & Partnership Committee (CIPC)

The CIPC serves as the university's principal platform for structured dialogue and partnership-building between Biruni and its external stakeholders.

Formed under the Rectorate's Office and chaired by the Rector's Advisor for Institutional Impact, the Committee includes:

- Deans and selected faculty members from health, education, and engineering disciplines;
- Officials from Zeytinburnu Municipality and Istanbul Metropolitan Municipality;
- Representatives of local NGOs, chambers of commerce, women's and youth associations;
- Student Council delegates and representatives from the Alumni Association.

The CIPC meets quarterly, following a formal agenda approved by the Rectorate, to:

- Evaluate ongoing collaborations and partnership outcomes;

- Identify community needs and opportunities for university intervention;
- Design and endorse new joint projects across domains such as health equity, environmental sustainability, and digital inclusion;
- Review annual progress reports from faculties and administrative units related to community impact activities; and
- Present recommendations for inclusion in the university's Strategic Action Plan.

Each CIPC session concludes with a Resolution Report, summarising decisions, timelines, and responsible units.

These reports are submitted to the University Senate and integrated into institutional quality assurance documentation.

This formalised workflow ensures that local engagement informs not only outreach activities but also policy development, budgeting, and curriculum enhancement.



**Companies and Intellectual
Property Commission**

a member of **the dti** group

The Sustainability & Data Office (SDO)



The Sustainability & Data Office (SDO) acts as the central data intelligence and accountability unit for all stakeholder engagement and sustainability initiatives.

It is mandated to collect, analyse, and report on the quantitative and qualitative outcomes of all local and regional collaborations, ensuring alignment with both national higher education standards (YÖKAK) and international benchmarks (UN SDGs, EUA principles, THE Impact Rankings). Key responsibilities include:

- Developing and maintaining a Stakeholder Engagement Dashboard that tracks participation frequency, representation diversity, and outcome indicators;
- Linking engagement metrics to the university's Key Performance Indicators (KPIs), ensuring they directly influence institutional performance reviews;

- Preparing Transparency Reports and Impact Summaries for inclusion in the annual Biruni Impact & Sustainability Report;

- Overseeing the ethical use of data, ensuring that engagement results are communicated publicly in accordance with open-data principles;

- Coordinating with the Quality Commission and Strategic Planning Office to integrate stakeholder feedback into national accreditation submissions and internal audits.

By quantifying participation and measuring its tangible effects, the SDO ensures that community involvement is not symbolic or event-based, but structural, continuous, and accountable.

This data-driven approach positions Biruni as one of the few Turkish universities to connect civic engagement with institutional performance management.

Annual Rectorate Consultations

Each spring, the Rectorate hosts the Annual Local Stakeholder Consultation Meeting, a high-level participatory forum designed to align university strategy with regional priorities and social needs.

Participants include:

- Senior representatives from Zeytinburnu Municipality, Istanbul Metropolitan Municipality, and the District Governorship;
- Directors from local education, health, and social service departments;
- Representatives from refugee resettlement and humanitarian agencies, such as UNHCR partners and local NGOs;
- Leaders of civil society platforms, neighbourhood associations, and private sector chambers.

During these consultations, participants review:

- The previous year's community impact outcomes, including data on health outreach, education access, and sustainability projects;
- Proposed campus development plans and urban integration initiatives (such as

transportation access, waste management, and green infrastructure);

- Joint opportunities for training, research, and public awareness campaigns;
- Local challenges and policy gaps that can be addressed through university expertise.

Feedback collected through these meetings is consolidated by the CIPC and SDO, then submitted to the Rectorate Executive Board and University Senate.

This process ensures that community perspectives are not merely advisory but are formally integrated into:

- The Annual Strategic Plan,
- Faculty operational goals, and
- The Sustainability Roadmap guiding future infrastructure, education, and research investments.

Furthermore, the outcomes of the consultations are published in a Stakeholder Feedback Bulletin, shared publicly on the university website to uphold transparency and mutual accountability.



Integration and Impact



The coordination among the CIPC, SDO, and the Annual Rectorate Consultations creates a closed-loop governance system:

- Dialogue (CIPC) Data & Measurement (SDO) Strategic Action (Rectorate) Public Accountability (Annual Report).

This integration ensures that community engagement is not an isolated function but an embedded dimension of institutional governance, performance, and identity.

Through this system, Biruni University has positioned itself as a model of participatory governance in higher education, where academia, local government, and civil society operate as co-creators of sustainable social transformation.

Structured Engagement Mechanisms

Biruni University implements a range of structured, high-impact engagement mechanisms that institutionalise collaboration between the university and its surrounding ecosystem.

These mechanisms are designed not as one-off projects, but as sustained, multi-stakeholder platforms that ensure continuity, inclusivity, and co-creation of social, environmental, and educational outcomes.

Each platform operates with defined governance, monitoring, and evaluation procedures coordinated by the Community Impact & Partnership Committee (CIPC) and the Sustainability & Data Office (SDO).



Biruni–Zeytinburnu Urban Dialogue Series



The Biruni–Zeytinburnu Urban Dialogue Series stands as the university’s flagship local governance and civic engagement programme.

It is a joint initiative between Biruni University and the Zeytinburnu Municipality, functioning as a permanent dialogue mechanism that brings together:

- City planners, architects, and environmental engineers,
- Representatives of residents’ associations,
- NGOs active in migration, urban inclusion, and accessibility,
- Faculty experts and researchers from public health, social sciences, and urban studies,
- High school students and youth community leaders.

Each Dialogue Series follows a structured format:

1. Issue Identification: Topics are co-selected based on urban data and community needs — such as sustainable urban health, disaster resilience, inclusive mobility, and migrant integration.

2. Thematic Workshops: Multidisciplinary groups analyse data, review best practices, and generate locally applicable models.

3. Policy Briefing Sessions: University researchers and municipal officers jointly develop policy briefs summarising findings and recommendations.

4. Integration & Implementation: These briefs are formally presented to the Municipal Council and incorporated into the Zeytinburnu Annual Development and Action Plan.

Impact Highlights

- Policy inputs integrated into the municipality's 2024–2025 Urban Accessibility Plan.
- Joint design of “Healthy Neighbourhoods” pilot programme promoting walkability, safe public spaces, and air quality monitoring.
- Collaboration with Biruni's Faculty of Engineering to conduct heat vulnerability and resilience mapping for local planning authorities.

This platform has effectively established Biruni University as a knowledge partner for local governance, contributing directly to SDG 11 (Sustainable Cities and Communities) and SDG 3 (Good Health and Well-being).



Health for All Roundtables



The Health for All Roundtables represent a continuous, evidence-based collaboration between Biruni University Hospital, Faculty of Medicine, and key actors in the Turkish public health ecosystem.

They convene representatives from:

- The Ministry of Health, Istanbul Provincial Health Directorate, and local clinics,
- NGOs supporting refugee and disability inclusion (e.g., Association for Refugee Health Support, Turkish Red Crescent),
- Community leaders and local journalists to ensure public communication of health initiatives.

Each roundtable focuses on a specific public health theme—such as maternal and child health, mental health, non-communicable disease prevention, or equitable access to healthcare.

Participants jointly design and evaluate public health outreach and education programmes tailored to local realities.

Major Outcomes Include:

- Annual Free Cancer Screening Week, providing early detection services to over 6,000 local residents, particularly women in underserved neighbourhoods.
 - Maternal and Child Health Education Programme delivered through municipal community centres, now integrated into the Zeytinburnu Health Directorate’s ongoing public health curriculum.
 - Vaccination Awareness and Outreach Campaigns targeting refugee families and low-income households, implemented jointly with the Ministry of Health and UNHCR-affiliated agencies.
 - Launch of “Biruni Health in the City” — a mobile clinic initiative run by faculty, students, and volunteers to provide basic health services and counselling to vulnerable populations.
- The Roundtables directly advance SDG 3 (Good Health and Well-being) and SDG 10 (Reduced Inequalities) by transforming medical expertise into community-driven health equity.

Civic Partnership Forums

The Civic Partnership Forums provide a recurring mechanism for cross-sectoral collaboration between academia, business, and civil society.

Held twice a year, the Forums bring together:

- Representatives from local business associations and professional chambers,
- Women's cooperatives and social entrepreneurs,
- Environmental NGOs, sustainability experts, and green innovation startups,
- Youth and education foundations focused on career guidance and inclusion.

Each forum is designed around thematic priorities aligned with Biruni's Sustainability Action Plan and municipal development agenda.

Typical themes include:

- Renewable energy transition and sustainable urban living,
- Women's participation and economic empowerment,
- Youth entrepreneurship and innovation,
- Climate adaptation and circular economy models.

Key Achievements:

- Launch of the "Girls in STEM" Mentorship Network, connecting female university students with women engineers and scientists across Istanbul; over 300 mentees have participated since 2023.

- Establishment of the Refugee Women Entrepreneurship Incubator, providing vocational training, financial literacy, and micro-grant access.

- Co-development of Renewable Energy Awareness Programmes in collaboration with Istanbul Energy Directorate and local schools, reaching 2,000 secondary students.

- Annual Green Ideas Contest that invites youth to propose sustainability solutions for their communities, supported by local sponsors and Biruni's Innovation Centre.

By fostering collaboration between economic, social, and academic sectors, the Civic Partnership Forums contribute to SDG 5 (Gender Equality), SDG 8 (Decent Work and Economic Growth), and SDG 17 (Partnerships for the Goals).



Community Volunteering & Inclusion Platforms



At the heart of Biruni's engagement philosophy lies the belief that education and social responsibility must evolve together.

This is embodied in the Biruni Volunteer Hub, a cross-institutional platform co-managed by students, faculty, and the Sustainability & Data Office.

The Hub integrates service-learning into the curriculum by linking academic courses with hands-on community work.

Faculty members act as supervisors, helping students connect theoretical learning to real-world challenges through reflective practice.

Core Focus Areas:

- Refugee Education and Integration: Language courses, mentoring, and psychosocial support in

collaboration with local NGOs and public schools.

- Disability Inclusion: Accessibility audits on campus and community centres, inclusive sports days, and volunteer support for rehabilitation clinics.

- Environmental Clean-Up Drives: Regular coastal and urban clean-up events, tree planting, and waste segregation campaigns in partnership with Zeytinburnu Municipality.

- Food Security and Poverty Relief: Distribution of food packages and meal support during national holidays, in coordination with local social services.

- Health Awareness Campaigns: Student-led events on nutrition, hygiene, and mental well-being conducted in public spaces.

Results and Recognition:

- More than 5,000 student volunteers have participated in over 40 community projects since 2022.

- The Volunteer Hub was recognised by the Istanbul Provincial Directorate of Youth and Sports for its contribution to civic education.

- Integration of volunteerism as an elective credit course in the Faculty of Education, making Biruni one of the first universities in Türkiye to formally credit civic engagement.

Through the Volunteer Hub, Biruni University demonstrates how community engagement can be an integral component of the learning ecosystem, transforming both students and society.

Impact and Sustainability

Collectively, these engagement mechanisms create a permanent architecture of partnership, ensuring that Biruni University's relationship with its community is:

- Long-term rather than episodic,
- Reciprocal rather than hierarchical,
- Measured and accountable rather than symbolic.

The outcomes of all these mechanisms are systematically reported through the Biruni Impact & Sustainability Report, reviewed by the Rectorate and published annually for public access.

This institutionalised model of engagement allows Biruni University to function as both a knowledge institution and a civic partner, contributing continuously to the sustainable development, resilience, and social cohesion of its local and regional ecosystem.



Integration into Decision-Making Processes



At Biruni University, stakeholder engagement is not an outreach activity—it is a governance mechanism. Feedback, data, and insights emerging from all community engagement platforms are systematically integrated into the university’s formal decision-making architecture through defined reporting lines and accountability procedures.

This ensures that local voices tangibly influence institutional direction, planning, and policy formation.

CIPC Consolidation and Reporting

The Community Impact & Partnership Committee (CIPC) functions as the central aggregation hub for stakeholder inputs. After each engagement cycle—such as roundtables, forums, and dialogues—the Committee compiles a Comprehensive Stakeholder Feedback Report, including:

- o Summaries of public consultations and thematic discussions,
- o Quantitative metrics (participation numbers, gender balance, demographic diversity),
- o Qualitative insights reflecting local priorities, concerns, and expectations,
- o Evidence-based recommendations from faculty and municipal experts.

These reports are formally reviewed by the Rectorate Executive Board and the University Senate every semester. The outcomes of these reviews directly shape the following year's strategic planning agenda.



Institutional Planning and Strategic Integration



Accepted recommendations are integrated into two key institutional instruments:

- o The Annual Institutional Strategic Plan, which governs the allocation of financial and human resources; and
- o The Biruni Sustainability Action Report, which outlines the measurable commitments and progress related to sustainability, inclusion, and community impact.

By embedding community data into these strategic documents, Biruni ensures that civic engagement is budgeted, monitored, and owned at the highest governance level.

Policy Development and Innovation

Several major university-wide initiatives originated directly from stakeholder consultations:

- o The Biruni Green Campus Strategy, co-designed with municipal environmental departments, which introduced renewable energy pilots and waste reduction systems;
- o The Community Health & Well-Being Agenda, developed in response to feedback from local health NGOs, leading to free screening and health literacy campaigns;
- o The Equality, Diversity, and Inclusion Charter, shaped through multi-stakeholder dialogues on gender equality, accessibility, and refugee inclusion.

These examples illustrate that external feedback does not remain advisory-it is transformed into institutional policy and systemic change.



Faculty-Level Accountability



Each academic unit is mandated to document its community engagement outcomes in its Annual Faculty Activity Report, using a standardised reporting template provided by the Sustainability & Data Office.

These reports cover project details, partner institutions, number of beneficiaries, measurable impact, and alignment with the SDGs.

The Rectorate reviews them as part of the Annual Performance Assessment, linking faculty-level contributions to institutional KPIs.

Through this cascading structure, the university has created a two-way governance channel-local input flows upward, while strategic action flows downward, ensuring responsiveness and coherence across all levels.

Transparency, Monitoring, and Public Accountability

Biruni University places transparency, data integrity, and public accountability at the core of its governance philosophy.

The institution believes that genuine stakeholder participation must be both measurable and visible, ensuring that community engagement outcomes are not anecdotal but empirically verifiable.



Open Data and Public Disclosure Systems



The university maintains an Open-Data Transparency Portal, accessible through its website, which provides:

- Annual data on stakeholder satisfaction and participation rates,
- Impact metrics for each civic and sustainability project,
- Reports on student and faculty volunteerism,
- Environmental performance indicators (e.g., energy, waste, carbon footprint),
- Updates on ongoing partnerships with local government and NGOs.

All data sets are validated by the Sustainability & Data Office (SDO) and verified by the Quality Commission (Kalite Komisyonu) before publication to ensure reliability, confidentiality, and ethical compliance.

This open-access model reflects Biruni's commitment to SDG 16 (Peace, Justice, and Strong Institutions) and SDG 17 (Partnerships for the Goals) by fostering a culture of trust, participation, and institutional integrity.

Monitoring and Evaluation Framework

The Sustainability & Data Office employs both quantitative and qualitative methodologies to monitor the scope, depth, and impact of engagement:

- **Quantitative Tools:**

Statistical analysis of participation numbers, gender and socio-economic representation, event frequency, and resource allocation efficiency.

- **Qualitative Tools:**

Structured focus groups, participatory evaluation sessions, and social impact mapping, which trace how engagement activities translate into tangible improvements in the community (e.g., health outcomes, educational access, social cohesion).

- **Outcome Tracking:**

Each engagement initiative is assigned a unique project code in the Biruni Impact Database, allowing traceability from planning through implementation and evaluation.

- **Feedback Loops:**

Results from stakeholder surveys and community focus groups are shared back with participants through Community Feedback Bulletins, closing the loop between participation and institutional action.



Institutional Reporting and External Accountability



Findings from all monitoring processes feed into the annual Biruni Impact & Sustainability Report, a flagship publication that:

- Consolidates data from all faculties, administrative units, and external partners;
- Highlights case studies of successful co-creation projects;
- Presents SDG-aligned performance indicators;
- Outlines next-year commitments for continuous improvement.

This report is publicly available on the university's website and submitted to external partners, accreditation bodies, and international ranking agencies (e.g., THE Impact, QS, and YÖKAK). The Quality Commission independently audits these engagement records within the framework of the university's Continuous Improvement Cycle, ensuring that each activity contributes to measurable progress in transparency, inclusion, and impact.

The Commission's reviews include:

- Random sampling of project documentation for accuracy,
- Evaluation of the link between community impact and institutional strategy,
- Recommendations for policy refinement and capacity development.

A Culture of Transparent, Participatory Governance

Through this integrated system of monitoring and public accountability, Biruni University has evolved into a living laboratory of open governance.

Stakeholders-whether municipal authorities, NGOs, or citizens-can trace their own contributions to real institutional outcomes.

Faculty and students, in turn, can see how their engagement efforts shape not just local realities but the strategic identity of the university itself.

By making participation both visible and verifiable, Biruni University sets a new benchmark for ethical, transparent, and socially accountable higher education governance in Türkiye and beyond.

